

Abu Dhabi

ABU DHABI TOURIST GUIDE

TRAINING & LICENSING PROGRAMME

دائرة الثقافة والسياحة
DEPARTMENT OF CULTURE
AND TOURISM



Section 9



Abu Dhabi

1.1 Iconic Landmarks	4
a.The Founder's Memorial	4
b.Aldar HQ	12
c.Capital Gate	14
d.World Trade Centre Souk & The Burj Mohammed Bin Rashed	16
e.Etihad Park	18
f.Emirates Palace Mandarin Oriental Hotel	20
g.Etihad Towers	22
h.Sheikh Zayed Grand Mosque	24
Interior features of the mosque	30
i.Nation Towers	34
j.W Abu Dhabi	35
2.1 Culture and Heritage Sites	36
a.UAE Currency Museum at the Central Bank	36
b.Manarat Al Saadiyat	38
c.Qasr Al Hosn	39
d.Hudayriyat Island	44
e.Saadiyat Cultural District	46
f.Zayed National Museum	48
g.Guggenheim Abu Dhabi	50
h.Louvre Abu Dhabi	52
i.UAE Pavilion	56
j.Union Square	57
k.Wahat Al Karama	58
3.1 Family Attractions	62
a.Abu Dhabi Corniche	62
b.Emirates Park Zoo and Resort	64
c.Ferrari World Abu Dhabi	66
d.Yas Marina Circuit	70
e.Yas Waterworld	72
f.Warner Bros. World Abu Dhabi	76
g.CLYMB™ Abu Dhabi	80

4.1 Sustainable Tourist Attractions	84
a. Al Wathba Wetland Reserve	84
b. Mangrove National Park	86
c. Masdar City Project	88
d. Jubail Mangrove Park	92
5.1 Sports and Leisure Activities	94
a. Abu Dhabi City Golf Club	94
b. Abu Dhabi Golf Club	96
c. Saadiyat Beach Golf Club	98
d. Al Ghazal Golf Club	99
e. Yas Links Golf Club	100
f. YAS Acres Golf & Country Club	101
g. Yas Kartzone	102
h. Al Forsan International Sports Resort	104
i. Abu Dhabi Equestrian Club	106
j. Al Wathba Cycle Track	108
6.1 Sea and Water	110
a. Beaches in Abu Dhabi	110
b. Corniche Beach	111
c. Yas Beach	112
d. Saadiyat Beach Club	114
e. Kai Beach	114
f. Al Bateen Beach	115
g. Al Bateen Ladies Social Club By Matcha	115
h. Noukhada	116
i. Yas Marina	118
7.1 Shopping	120
a. Shopping Malls in Abu Dhabi City	120

a.The Founder's Memorial

The Founder's Memorial is a permanent national tribute dedicated to commemorating, celebrating and reflecting on the life, legacy and values of the late Sheikh Zayed as a man and a leader. The space serves as a place of gathering that instills pride and purpose in the UAE community.

Through a series of personal encounters with Sheikh Zayed, the man and the leader, The Founder's Memorial invites visitors to embark on a journey of discovery through his life and legacy, enriching understanding of his character, the causes he championed, and the values he voiced to the UAE and the world. The space also features a range of experiences designed to reveal aspects of the broader social, cultural and environmental heritage of the UAE, including art, stories, exhibitions and an array of local trees and plants.



The Constellation

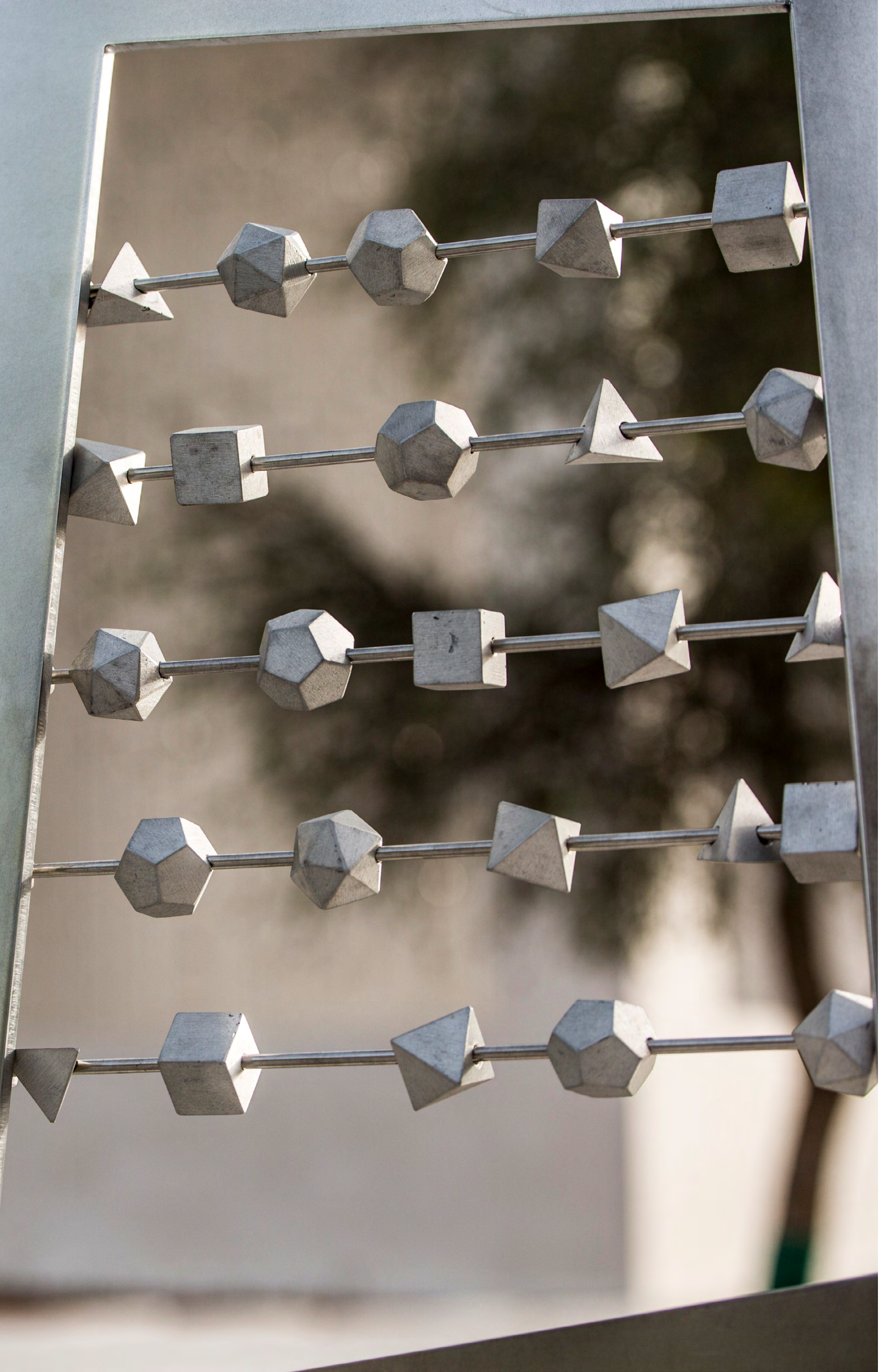
Housed in a 30-metre-high pavilion, The Constellation is a dynamic, three-dimensional portrait of the late H.H. Sheikh Zayed bin Sultan Al Nahyan that can be experienced differently from multiple viewing points around the memorial and from other vantage points.

Artist Ralph Helmick created the portrait of the late Sheikh Zayed through an impressive constellation of 1,327 hanging shapes. These shapes are known as platonic solids, also referred to as 'cosmic figures', which are suspended through the use of 1,110 cables.

Platonic solids are special three-dimensional symmetrical shapes with unique mathematical properties. There are only five platonic solids and each one is made up of a series of identical faces and corners. Renowned for their beauty, these shapes have inspired artists and scientists for millennia. **The five platonic solids are:**

- Tetrahedron (Four faces)
- Cube (Six faces)
- Octahedron (Eight faces)
- Dodecahedron (Twelve faces)
- Icosahedron (Twenty faces)

This depicts the late Sheikh Zayed as a celestial constellation and as our guiding light. The shapes come together to reveal Sheikh Zayed's image, watching over the Emirati people and the nation that he loved.



The Heritage Garden

This intriguing garden features just some of the plants traditionally used by the Bedouin. They were ingenious in their use of the natural environment, and many of these remedies are still in use today. There are a total of 188 trees throughout the memorial's landscaping, which encompasses 3.3 hectares of public space. The Sanctuary Garden, located in the public plaza that surrounds The Constellation, is planted with groves of Ghaf and Sidr trees that provide natural shade from the sun. A series of Falaj water channels are set into the landscape, reflecting Sheikh Zayed's lifelong project to 'green' the Emirates.

Within the Heritage Garden you can find:

Desert Cotton

Traditionally used to pad saddles and cushions, desert cotton was also thought to reduce swelling, heal wounds, and combat aches and pains.

Henna

Still used to dye hair and apply intricate patterns to hands and feet, henna also has antibacterial properties.

Toothbrush Tree

The twigs from this tree have antiseptic properties, making them ideal for cleaning your teeth. Traditionally, its leaves were also used to soothe blisters and scorpion bites.

Alkali Weed

Traditionally used by the Bedouin to settle the stomach, alkali weed was also thought to relieve coughs.

Caralluma

Brewed as a tea, Caralluma was traditionally used to treat liver complaints and relieve pain.

Harmal

The Bedouin traditionally applied the seeds of the harmal plant to the skin to remove moisture and cool the body. The seeds are also believed to ease stomach complaints.

Tree Species - Fitneh (Also known as the Sweet Acacia)

The soft, feathery leaves and highly fragrant yellow flowers of the fitneh tree are a striking contrast to its rough, thorny bark. All parts of this remarkable tree – bark, leaves and roots – are known for their astringent properties and were traditionally used to treat wounds, skin diseases and inflammation. The bark was also used to soothe ailments such as rheumatism, blood disease, bronchitis and ulcers.

Tree Species - Samr (Also known as the Umbrella Thorn)

Small and wiry, the samr tree is easily identified by its contorted seed-pods and distinctive thorns. A hardy species, the samr thrives on gravel and sand plains, along wadi banks and on the slopes of mountains, where it provides grazing for camels, goats and local wildlife. The wood of the samr was traditionally used as fuel and for making tools, while the edible gum from the tree was eaten to combat infections.

Tree Species - Sidr

Mentioned in the Holy Quran as a blessed plant of paradise, the sidr tree is held in high esteem throughout the Islamic world. In the Emirates, its leaves were traditionally dried and ground to a powder that could be added to water to create a natural shampoo. The fruit, leaves, roots and bark were also used for various treatments, including disinfecting wounds and healing skin diseases. Today, honey from the sidr is highly prized.

The Walkway

This elevated walkway runs round the perimeter of the Sanctuary Garden. From here, you can look into the garden and towards The Constellation, built as a memorial to Sheikh Zayed, and also outwards to the skyline of the City of Abu Dhabi, which is also surely a living memorial to Sheikh Zayed. He was the one that had a clear vision for this world-class city, and he was the one who made it happen. The pathway running behind the memorial artwork gives visitors insight into the causes and beliefs that Sheikh Zayed held. As they walk along the raised path, **visitors are invited to read these words by Sheikh Zayed:**

“I have always had big dreams for this country, the land of our ancestors. I dreamt that one day, we would equal other countries that were ahead of us in development and progress.”

“Nothing is more valuable to me than the homeland and its citizens. I shall fight to raise and uphold the status of this country and to make the citizens happy.”

“The greatest piece of advice that I give to my sons is not to be overly proud. I believe that it neither belittles nor undermines the powerful to behave with humility and respect.”

“The nation’s true wealth is to be found in serious, honest work which benefits people and society, for the fruit of such labour endures and gives value to people and the state.”

The Welcome Centre

Visitors will have the opportunity to engage with the man and the leader through rarely seen footage, personal stories, articles and interviews with those who knew and loved Sheikh Zayed. This state-of-the art multimedia experience also features a number of screened ‘Sheikh Zayed Encounters’, that give visitors the chance to hear from the late leader in his own words.

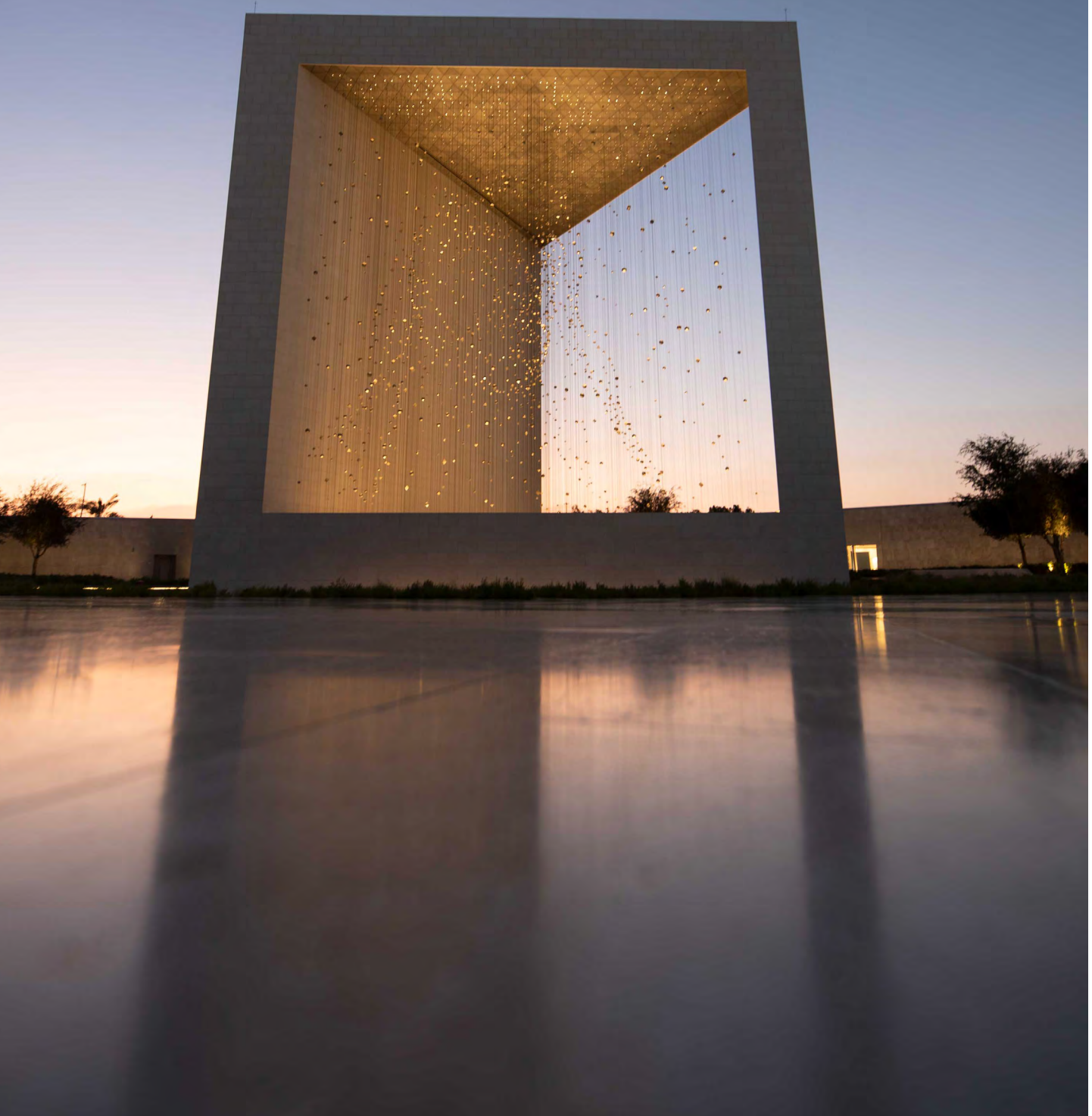
Tours & Opening Hours

Complimentary tours led by trained Cultural Tour Guides are available to guide visitors. The Cultural Tours are available in English and Arabic from 9am to 10pm and last around 30 minutes. Visitors can book a tour by sending an email to visit@thefoundersmemorial.ae or at the Welcome Centre on arrival. Space is limited, so bookings are recommended.

Further your knowledge

The official website of The Founder's Memorial

<http://www.thefoundersmemorial.ae/en/>



b.Aldar HQ

Aldar HQ is the head office of Abu Dhabi property developer Aldar. It was completed in 2010, and was designed by Marwan Zgheib, founder of MZ Architects. It is a 121m tall, 23-storey commercial building located in the Al Dana business district on Al Raha Beach Development.

<https://www.arup.com/projects/aldar-headquarters/>

Inspired by the shape of a clam shell, which hints at the area's historical pearl harvesting past, the circular structure's curved glass exterior glistens with the reflection of sunrise on the building's eastern side and sunset on the west. Resembling a pearl resting at the ocean's edge, it has become one of Abu Dhabi's iconic landmarks. The building represents a number of impressive 'firsts' for the region and is recognised as:

- The Middle East's first round skyscraper.
- The first UAE building to use the 'diagrid' - an external, diagonal, steel grid with diamond-shaped glass panels - similar to that used for iconic London office development commonly known as the Gherkin.
- Housing Abu Dhabi's first underground waste disposal system, which feeds waste from the building straight through to a recycling and treatment plant.

Adding to its green credentials, this eco-friendly building is not only made of recyclable materials, but also hosts a cooling mechanism as well as energy-efficient water and lighting systems. On each floor, meeting rooms and offices along the edges of the building make the most of the natural light which floods in through the glass façade. With such initiatives, Aldar HQ has more than earned its 82% efficiency rating and Leadership in Energy and Environmental Design (LEED) silver rating award by the US Green Building Council.¹

The circular headquarters provides a considerable 62,000m² office space normally only found in much taller constructions. This is thanks to the building's unique circular design, which results in fewer internal support columns taking up valuable space. The two spheres are joined by a roof made from a singular glass and structural strip. It is the building's diagrid, also subsequently used in Abu Dhabi's Capital Gate Tower, which gives it its curved shape, together with stability and flexibility.

The internationally acclaimed Aldar HQ was awarded the title 'Best Futuristic Design' at the Building Exchange Conference (BEX) in 2008 and was also named as one of 'The World's Most Spectacular Corporate Headquarters' by Emporis in 2013.²

¹See: <https://www.usgbc.org/leed>

²Source: <https://www.thenational.ae>



c.Capital Gate

Capital Gate is also known as The Leaning Tower of Abu Dhabi. It was designed by British architects RMJM (Robert Matthew Johnson Marshall) and is owned and developed by Abu Dhabi National Exhibitions Company (ADNEC).

The tower was designed to tilt 18° westwards, which is four times more than Italy's Leaning Tower of Pisa. Work began on the 35-floor skyscraper in 2007 and was completed in 2011. This iconic building was certified by the Guinness World Records in 2010 as the 'World's Farthest Manmade Leaning Building.'³

The tilt was achieved by constructing a solid, concrete core with a curve that bent in the opposite direction to the way the building leaned. It was rooted into the ground with 500 pile foundations driven nearly 30 metres deep.

An external, diagonal, steel grid with diamond-shaped glass panels or 'diagrid', similar to that used in the construction of Aldar HQ, gives the building its stability and flexibility. The heat-reflective glass panels were hand-made to fit the structure. It is located between Zayed Sports City and the Zayed Military hospital on Al Khaleej Al Arabi Street, (30th Street), and stands at 160 metres tall.

Capital Gate connects to the grandstand of the Abu Dhabi National Exhibition Centre (ADNEC) with a wavelike structure known as 'the Splash'. At 133,000m², ADNEC is the largest conference and exhibition venue in the Middle East, and the building is considered environmentally friendly. Its green credentials include:

- External, energy-efficient Light Emitting Diode (LED) lights which minimise light pollution.
- The Splash structure acts as a sunshade and protects the floor inside from 30% of the sun's rays.
- A double façade on the building's upper floors, made of special anti-glare glass, reduces heat entering the building by 5%.

Capital Gate houses office space on the lower half and Andaz Capital Gate Hotel on the higher floors. The five-star hotel features an outside pool deck on top of the Splash, a glass atrium, and a tea lounge which overhangs the building, suspended 80m above the ground. It is a popular hotel for golf enthusiasts as it is located 15 minutes away from Abu Dhabi Golf Club, and also with business travellers due to its 15-minute drive from Zayed International Airport.

³ Source: <http://www.guinnessworldrecords.com/world-records/farthestmanmade-leaning-building>



d.World Trade Centre Souk & The Burj Mohammed Bin Rashed

The World Trade Centre Souk & Mall in Abu Dhabi is located on the original site of the city's Old Souk on the intersection of 2nd and 3rd Streets, next to the Lake Park and the Corniche at the northern tip of the island. It was designed by British architects Foster and Partners.

The Old Souk was built in the early 1970s and was one of the first projects to be completed under the late Sheikh Zayed's masterplan for the reshaping of Abu Dhabi city after oil was discovered. The souk had nearly 200 small, family-run stores and was a vibrant social hub where residents would buy clothes, shoes, electrical equipment, and even gold, and exchanging currencies and news. The late Sheikh Zayed himself was fond of visiting the souk during Eid and would spend time talking with shopkeepers in their stores.

A series of fires in 2003 completely destroyed the Old Souk and its remains were finally demolished in 2005. The shopkeepers had to relocate around the city and, as a result, Abu Dhabi city centre lost a vital piece of its cultural heritage. In 2006, Abu Dhabi's property developer Aldar Properties approached architects Foster and Partners to design a modern interpretation of the Old Souk on the original site, creating a new 'city within a city'. This was to be the ambitious World Trade Centre Abu Dhabi project.

Foster wanted to reflect Abu Dhabi's past and so used aspects from traditional Arabian architecture in the redesign of the market space. The World Trade Centre Abu Dhabi development was completed in 2014 and now hosts one of the largest Arabic markets in the world. The Mall at World Trade Centre Abu Dhabi hosts the top brands, shops, fine dining options and cinema. On the other side, The Souk at World Trade Centre Abu Dhabi has everything from traditional souvenirs, Arabic perfumes, henna and spices to jewellery. The project's traditional features include:

- Courtyards, squares and narrow alleyways
- Integrated balconies and walkways
- Blue and yellow ornate glass windows that filter light into the market
- Panelling with traditional Islamic perforations and octagonal geometric panels based on traditional *zellij* tiles

The market site also has modern features such as a retractable roof section which closes in hotter months to keep the temperature cool. Visitors can relax and dine in the roof gardens that cover the low-rise retail halls, called podiums. Rising above the retail halls, market space and roof gardens are two striking, blade-shaped towers that make up the rest of the World Trade Centre Abu Dhabi project:

- **Commercial Tower:** Also known as World Trade Centre Abu Dhabi, the Offices and more recently the Arabtec Tower.
- **Residential Tower:** Known as the Burj Mohammed Bin Rashid, the building is Abu Dhabi's highest skyscraper at 381 metres with 93 floors.
- Courtyard by Marriott Hotel is perfectly positioned adjacent to the city's The Mall at World Trade Centre, and the tallest tower in Abu Dhabi, the Burj Mohammed Bin Rashid.

Both of the towers are angled at a sharp 50 degrees at the top and carry custom-made solar panels designed to receive as much sunlight as possible as the sun tracks from east to west during the course of the day. The panelled roofs are the most complicated of their kind ever built.

<https://www.skyscrapercenter.com/building/burj-mohammed-binrashid/259>

DID YOU KNOW?

Perching on the top of the Residential Tower within the World Trade Centre development is one of the world's highest swimming pools.

Further your knowledge

Foster and Partners' webpage on the development

<http://www.fosterandpartners.com/projects/world-trade-centre-souk/>

MegaStructure' documentary on Central Market:

<https://www.youtube.com/watch?v=-ig-1EPEZMo>

e.Etihad Park

Yas Island's custom-built open-air venue is known as Etihad Park as part of a larger partnership deal announced between Etihad Airways, the national airline of the United Arab Emirates, and Ethara, the region's leading entertainment company.

Etihad Park, formerly du Arena, is the largest outdoor venue in the Middle East with a capacity of over 40,000 people. The venue has welcomed over 1.5 million fans since 2009, and hosted some of the biggest international A-list stars during events, such as the Yasalam After-Race Concerts held over the Etihad Airways Abu Dhabi Formula 1 Grand Prix weekend. This custom-built, open-air venue has won multiple awards since its launch in 2009. A state-of-the-art platform, it is kitted out with the most advanced facilities and VIP experiences, making it a go-to choice for premium sport and music events. The flexible space, which can accommodate a range of seating and standing layouts, has hosted a variety of events including:

- Concerts by top international artists such as Bon Jovi, Calvin Harris, Coldplay, Justin Timberlake, Madonna, Metallica, Rod Stewart, the Rolling Stones, and many more.
- Yasalam after-race concerts during the Formula 1 Etihad Airways Abu Dhabi Grand Prix in November
- Wireless Festival Abu Dhabi

As well as having disabled access and refreshments available onsite, the venue offers a number of VIP areas with direct and clear views of performances and VIP parking spaces with separate entry and exit from the venue.

Optional Activity: What events bring visitors to Etihad Park?

Take a look at the Etihad Park link and make a note of the concerts and events that are due to take place in each venue.

<https://www.yasisland.com/en/events/etihad-park>



f.Emirates Palace

Mandarin Oriental Hotel

The Emirates Palace Mandarin Oriental Hotel is a five-star hotel located on the western tip of Abu Dhabi's promenade, known as the Corniche. Built between 2001 and 2005, it is owned by the Government of Abu Dhabi and managed by Mandarin Oriental as their flagship hotel in the Middle East.

Its exterior was designed by architect John Elliott of Wimberley, Allison, Tong and Goo (WATG), international specialists in resort design. WATG was responsible for the design of many well-known hotels such as MGM Grand in Las Vegas, Atlantis the Palm in neighbouring Dubai, and the interior refurbishment of Claridge's, London.

Kongsak Yuktasevi of KY&A designed the interior of Emirates Palace over a period of four years and with an unlimited budget. Over 12,000 workers were involved in the hotel's construction before it opened its doors in November 2005. It now employs over 2,000 staff, including 170 chefs, from around 50 different countries.

Outside, the hotel is based on traditional Arabian architecture, using colours to reflect the desert sand. The building's central Grand Atrium dome is 42m wide, and made of silver- and gold-coloured glass with a gold top or finial. A further 114 smaller domes top other parts of the main and outbuildings. From inside, the hotel is just as luxurious, featuring gold, mother of pearl, glittering crystals and polished marble floors. Suspended from the ceilings are 1,002 chandeliers - the largest weighing 2.5 tonnes - made from Swarovski's superior quality Strauss crystals. Two decorative carpets, depicting the hotel and weighing a tonne each, hang on its walls.

The hotel has 394 guest rooms and 92 suites. It acts as the official guest palace for Abu Dhabi's Government, with the top floor hosting suites for UAE royal families. Spanning one kilometre from the east to west wing, and with grounds covering an expanse of over 1 million square metres,

guests benefit from:

- a 1.6km long private beach, with sand imported from overseas
- a private harbour
- two swimming pools
- 15 restaurants including Lebanese, Arabic and Italian cuisine as well as Chinese at the award-winning Hakkasan Abu Dhabi, which opened in 2010. There are variety of brilliant restaurants inside, from top Italian joint [Talea by Antonio Guida](#), inventive Indian eatery [Martabaan by Hemant Oberoi](#) to the vibrant Sand & Koal. A Moroccan-inspired spa offers a hammam, jacuzzis, steam rooms and an ice cave. Non-residents are also able to visit the hotel, but a strict dress code applies.

DID YOU KNOW?

At one time, in the lobby of the Emirates Palace Hotel, visitors could find a gold vending machine 'Gold to Go'. It dispensed gold bars featuring the Emirates Palace Hotel's logo.

<https://www.thenationalnews.com/business/travel-and-tourism/emiratespalace-atm-worth-its-weight-in-gold-1.413371>

g.Etihad Towers

Etihad Towers is a development located on Corniche West Street. The Towers are opposite the Emirates Palace Hotel and can be reached by car from the airport in just 30 minutes. Designed by Australian architects, DBI Design, the Towers are owned by influential businessman and member of Abu Dhabi's ruling family, H.H. Sheikh Suroor bin Mohammed Al Nahyan. It was completed in 2011, consisting of five separate towers, and a multi-level podium at the base. It offers a mix of residential and office space, a five-star hotel and shopping and eating outlets. Altogether the site spans over 500,000m².

With futuristic, sculpted forms, the Towers were inspired by symbols of local culture and heritage, such as sails, swords, and falconry.

Tower 1 houses Conrad Abu Dhabi Etihad Towers, a five-star hotel which offers 382 rooms and suites, together with 199 serviced apartments across 69 floors. Conrad Abu Dhabi Etihad Towers is the highest hotel in Abu Dhabi.

Tower 2 is the tallest of the five skyscrapers at 305 metres high and 74 floors, while towers 4 and 5 are the two smallest at 234 metres high with 61 floors and 218 metres high with 55 floors respectively. The three residential towers each have their own leisure facilities including:

- swimming pool
- sauna
- gymnasium
- bars, cafes and restaurants

Tower 3 is the office tower, which is slightly lower than the hotel building at 260 metres high. It contains 45,000m² of office space spread over 54 floors.

Guests at the hotel benefit from a private beach, three swimming pools, and the Talise Spa. Diners can choose from 12 restaurants and a range of international cuisines such as French, Italian and Lebanese. The restaurants are all based in The Podium at the base of the Towers.

At 277m high, the Conrad hosts Abu Dhabi's highest public viewing point, the 'Observation Deck at 300'. It is situated at the 74th floor in Tower 2 with spectacular views of Qasr Al Watan and Emirates Palace Hotel.

At the very base of the complex, the Podium contains The Avenue at Etihad Towers; two floors of luxury boutiques, many of which have private rooms for VIP shopping.

<https://www.skyscrapercenter.com/abu-dhabi/etihad-towers-t2/5194/>

DID YOU KNOW?

Vin Diesel's movie 'Fast and Furious 7' features a famous car jump stunt that was filmed at the Conrad Abu Dhabi Etihad Towers.

h.Sheikh Zayed Grand Mosque

Overview

The Sheikh Zayed Grand Mosque is one of the most important sites in Abu Dhabi. This magnificent structure stands at the entry to Abu Dhabi City. It was built nine metres higher than ground level so that it could be admired from a distance. It is considered one of the finest examples of Islamic architecture in the world. The mosque is located on 5th Street, off Sheikh Rashid Bin Saeed Street. Opposite the Grand Mosque stands the Wahat Al Karama (the Oasis of Dignity), a tribute to those who have given their lives for the UAE.

This is the UAE's official and largest mosque and is believed to be the eighth largest in the world. It can hold 50,000 worshippers (20,000 inside and over 30,000 in the courtyard outside). In total, the complex covers an area of 555,000 square metres (55.5 hectares). Abu Dhabi Municipality led the project with more than 38 contracting companies, while Halcrow Ltd., an engineering company based in the United Kingdom, took charge of the concrete construction.

Friday is, of course, the mosque's busiest day, when thousands of male and female worshippers gather to hear the khut'ba sermon that takes place before the midday prayer. Outside prayer time, visitors are very welcome and complimentary guided tours are available.

Plans to build the mosque began in the late 1980s, construction began on November 5th 1996, and it opened for worship in time for Eid al-Adha (The Feast of Sacrifice) in 2007. The mosque was named after the founding father of the UAE and the first president of the union, the late H.H. Sheikh Zayed bin Sultan Al Nahyan.



HH Sheikh Zayed

Sheikh Zayed was involved in all aspects of the design and structure of the mosque and chose to have the building covered entirely in white marble as a symbol of purity and peace. He wanted the mosque to be not only a place of worship, but also a cultural and educational centre to promote communication, cultural understanding, and tolerance. Unfortunately, Sheikh Zayed passed away in 2004 before the mosque was completed, and his son, the late H.H. Sheikh Khalifa bin Zayed Al Nahyan, became president and oversaw completion. Sheikh Zayed's mausoleum is located beside the north side of the mosque. The live 24/7 recitations of the Quran from the mausoleum that are spread throughout the mosque increase the spirituality and beauty of this architecture. The mosque is currently under the supervision of H.H. Sheikh Mansour bin Zayed Al Nahyan, UAE Vice President, Deputy Prime Minister, Chairman of the Presidential Court.

External features of the mosque

This impressive mosque is a stunning building which contains 82 domes, approximately 1,000 columns, four minarets, 24 carat gold-plated chandeliers, and the world's largest knotted carpet. The outer surfaces of the mosque, including the walls, domes and minarets, are covered in flawless SIVEC marble from Macedonia; more than 165,000 square metres of marble was needed. In the courtyard (the Sahan) the floor is covered with 30 different types of coloured marble tiles from Italy, India, Greece and China.



The courtyard

A Sahan or courtyard area is found in large mosques, used for worship at important religious times of the year such as during Ramadan, Eid al-Fitr (The Feast of Breaking the Fast) at the end of Ramadan, and Eid al-Adha. This area can accommodate up to 30,000 worshippers when full.

The floor of the courtyard was designed by British artist Kevin Dean, who created a floral design with lilies, irises and tulips set on multi-coloured marble tiles. Dean also worked on the decoration of four internal arches, the floor and walls of the main prayer hall and the floors of the northern and southern entrances. In the book, *The Moon and the Minaret*, Dean described how he wanted the designs to have a theme to link them together whilst representing Islam as an international faith. He cleverly used flowers from countries in the northern hemisphere in the northern entrance and plants and flowers from the southern hemisphere in the southern entrance. Flowers from the Arab Gulf region were used in the designs in the main prayer hall. The rest of the courtyard is inlaid with thousands of small pieces of white marble and this may well be the largest marble mosaic in the world.

Exterior columns

Around the edge of the Sahan runs an outdoor arcade with more than 1,000 six-sided columns. These are covered with white marble and inlaid with floral patterns of semi-precious stones such as lapis lazuli, red agate, amethyst and, in the centre of the flowers, mother of pearl. Each piece of the marble was carved and positioned by hand and the overall design of the columns is based on the trunk of the date palm, which has historical, cultural and economic importance for Abu Dhabi. This ancient Italian inlay technique, *pietra dura*, has been found in different historical landmarks like Taj Mahal in India.

Minarets

At each corner of the courtyard is a 106-metre-tall-minaret. One of the original uses of a minaret was to provide a high place for the mu'athin (caller of the prayer) to summon Muslims to prayer. The word minaret derives from the Arabic word of Manara, which means lighthouse, or place of enlightenment.

The Adhan (call to prayer) is centrally called in the Sheikh Zayed Grand Mosque and is broadcast to all the mosques throughout the main island of Abu Dhabi City.

The domes

The largest of the 82 domes is positioned over the centre of the main prayer hall, and is 84m high and 36.2m across. On top of this dome is a crescent-shaped finial in gold-glass mosaic, and arched windows are located lower down to let in natural light. The insides of these domes are covered in verses from the Holy Quran. The crowns of the domes are of a Moghul design, which resembles the shape of an onion and are covered in white marble. In addition to the white domes, a green glass dome can be found above the separate washing (ablution or wadu) facilities for men and women.

Reflective pools

Around the perimeter of the mosque, there is a series of rectangular, blue-tiled reflective pools which extend to a total of nearly 7,000 square metres. They are a traditional feature of Islamic architecture and gardens, and the pools cool the bright shimmer of the white marble.

At night, the pools enhance the effect of the 'lunar' lighting. This clever lighting system was designed by lighting architects Jonathon, Speirs and Major, and mimics the moon's phases. As the moon becomes fuller, the lighting increases in brightness to project a blue colour onto the white marble of the mosque.



Interior features of the mosque

Foyers

The main entrances to the mosque building itself are from the courtyard (Sahan) via foyers or hallways which give access to the main prayer hall. At the entrance to each of the four foyers there is a blue chandelier, the largest of which is located in the main foyer (East Entrance) and measures 4.5m across, 6.5m high and weighs two tonnes.

All seven chandeliers in the mosque were designed by the German lighting designer Faustig. Gold-plated (gilded) steel and Italian glass with a total of 40 million Swarovski crystals were used in the making of all the chandeliers in the mosque.

Floors, doors and walls

Throughout the external area of the mosque, there are wall panels of traditional Turkish 'Iznik' tiles. These are floral in design and are decorated with calligraphy of verses from the Holy Quran that were designed by Hasan Celebi (1937), a famous Turkish calligrapher. Iznik is a town in the Bursa Province of western Turkey.

All of the glass doors in the mosque are made of three separate sheets of Italian Murano glass. The inner and outer panes are clear, but sandwiched between them is a central pane which is a beautiful floral design made using mosaic, cut and sandblasting techniques. These glass doors bring light into the interior, lighting the walls, floors and domes.



Main prayer hall

The main prayer hall, which can accommodate 7,800 worshippers, is entered from the four foyers. This is mainly used when there are large groups of worshippers during Eid, Ramadan and Friday sermons. For the daily five prayers, there is a south prayer hall for men and a north prayer hall for women with capacities of 1,200 and 1,700 respectively, and it is symmetrical in design with almost everything repeated on either side of the centre, which is a feature of Islamic design.

Covering the entire floor of the main prayer hall is a huge and intricately designed Islamic carpet of wool and cotton which was designed, hand-knotted and woven over a period of two years by 1,200 craftspeople. It is designed with a traditional Islamic medallion and floral pattern with raised lines to show worshippers where to stand. The carpet covers a total of 5,400 square metres and weighs 35 tonnes. In 2007 it was officially recognised as the world's largest hand-knotted carpet by the Guinness Book of World Records.

Qibla wall

Like most mosques, there is a Qibla wall to indicate the direction of Makkah (Mecca) in Saudi Arabia and the location of the Ka'abah, the cubic-shaped building in Makkah towards which Muslims must face when praying. The designs on the Qibla wall feature 99 attributes of Allah designed in flower shapes and written in a Fatimid Kufic script by the Emirati calligrapher, Mohammed Al Tamimi. At the top centre is a large circle with 'Allah' (God Almighty) written inside, and in the middle of the Qibla wall is a semi-circular niche or Mihrab, an important part of a mosque where an Imam (prayer leader) stands to lead the worshippers in prayer. Before the microphone was used, the shape would help to project the Imam's voice so all could hear him. The main hall has three chandeliers of varying sizes, all with a design based on the date palm tree. The largest of these is 10 metres across, 15.5 metres high and weighs 12 tonnes. Inside the chandeliers are spiral staircases to enable maintenance and cleaning of their upper parts. Slightly to the right of the Mihrab is the wooden Minbar, a type of pulpit where the Imam stands to deliver khut'ba sermons before Friday prayers.

Clocks

There are 11 clocks in Sheikh Zayed Grand Mosque. They were all made in the United Kingdom from steel inlaid with mother-of-pearl and are shaped like a flower with six petals. Daily prayers are based on the movement of the sun, so the five prayer times change each day, and the clocks are designed to reflect this.

On each of the petals, digital displays mark the divisions of the day and run clockwise:

- The top petal indicates true dawn Fajr
- The second petal indicates sunrise and the Shorouq which is the end of dawn prayers.
- The third petal indicates the noon prayer Dhuhr which is performed between noon and mid-afternoon.
- The fourth petal shows the afternoon prayer Asr which is performed between mid-afternoon and sunset.
- The fifth petal shows the sunset Prayer Maghrib which is performed between sunset and darkness.
- The sixth petal indicates the late evening prayer Isha

Finally, there are two other digital displays:

- The display at the top of the clock's inner circle shows the date according to the Gregorian, or Western, calendar
- The display at the bottom of the clock's inner circle is the date according to the Islamic or Hijri calendar.

Tours

For complimentary guided tours, see the timings at this link:

<https://szgmc.gov.ae/en/worshippers/en-v-cultural-tours>

“**El-Delleel**” is a multimedia device offering virtual guided tours, which are available in 14 languages including sign language for the deaf and descriptive language for the blind. To make use of this service, visitors should go to the Visitor Service desk or book and pay online through this link:

<https://www.szgmc.ae/en/e-guide>

i.Nation Towers

Winner of an international design competition, this mixed-use hotel complex is located on Abu Dhabi's Corniche. The two towers are 52 and 64 storeys tall, with the roof of the base pavilions representing the evocative imagery of waves, sand and water to create a powerful architectural statement. Nation Towers is established as a premier retail, residential and hospitality address in Abu Dhabi.

The St. Regis Abu Dhabi Hotel is a business and social hub for Arabian royalty, corporate executives and leisure guests from all over the world. Located between the 33rd and 50th floors on Tower 2, the hotel's 283 luxuriously appointed guestrooms and suites offer captivating views of the Arabian Gulf. The St. Regis Abu Dhabi offers an array of leisure facilities, including the region's first Remède Spa and the Nation Riviera Beach Club. The complex is connected to the beach, the Nation Riviera Beach Club and pool pavilion across the Corniche, by way of a tunnel that passes under the wide waterfront boulevard. The complex also includes luxury retail space in the podium called Nation Galleria, featuring different dining options, and a cinema and luxury brand outlets.

DID YOU KNOW?

The bridge connects the towers at a height of 202m, which is 30 metres higher than the sky bridge of the Petronas Tower in Malaysia. Also, it has the world's highest interconnecting presidential St. Regis Hotel suite, which is housed on both 48th and 49th floors.

This steel bridge weighs over 400 tonnes.

j.W Abu Dhabi

This five-star hotel is the centrepiece of the Yas Island Marina complex and was developed by Aldar Properties. Construction started in 2007 and the hotel opened in November 2009, just before the first Formula 1 Etihad Airways Abu Dhabi Grand Prix.

The hotel is very well located, being only 10 minutes' drive from the airport. The city centre can also be reached in just 15 to 20 minutes. It is also close to the many family attractions and theme parks on Yas Island.

The hotel was designed by New York architects Hani Rashid and Lise Anne Couture of Asymptote Architecture, who worked closely with designers Jestico + Whiles and Richardson Sadeki to create its stunning design. The hotel has two buildings of 12 floors each, one on land and one on water, linked by a steel and glass bridge which spans over the racing circuit of Yas Marine Circuit. With one building within the circuit and one in Yas Marina, guests in some of the rooms and suites can watch races from their balcony.

The buildings are covered with a unique 'gridshell' architectural feature made of steel and glass which spans 219 metres and contains 5,096 diamond-shaped glass panels. These panels are fitted with Light Emitting Diodes (LEDs) which produce a beautiful effect at night. The exterior of the hotel was designed to represent speed and traditional Islamic arts and crafts at the same time. For the other hand, inside the hotel, the lobby walls are based on a modern version of a classical Arabic feature called a mashrabiya - a type of window which has latticework carved from wood and often contains stained glass.

There are a total of 499 guest rooms and 75 suites within the two buildings. As well as access to Yas beach for guests to relax in the sun, the hotel features a grand ballroom, a library, a fitness centre, a luxury spa (ESPA at W Abu Dhabi) with a steam room and rooftop pools which provide great views at sunset. There are also six international restaurants providing Italian, Indian, Middle Eastern, Japanese and Asian food.

DID YOU KNOW?

The hotel's 'gridshell' covering is based on the design of a traditional Emirati fishing net.

2.1 Culture and Heritage Sites

a.UAE Currency Museum at the Central Bank

The UAE Currency Museum is located on the ground floor of the Central Bank, near Marsa Al Bateen Marina. The museum explains the history of currency in the region, including the introduction of the dirham in 1973.

It was opened in 2013 to mark 40 years of the UAE Central Bank, and a commemorative coin was released to celebrate the anniversary. Within the museum is part of the Central Bank's collections of currency notes and coins, commemorative coins, and samples of various issues of UAE currency notes. It also includes coins and currencies from other countries, cash counting and sorting machines used by the Central Bank in the past, and the old note shredders. These were used to make holes in the security features of recalled notes and could process 100 notes at a time. The museum also has processing machines which would check authenticity and sort the real from the counterfeit at a rate of eight notes per second.

Collectors can pay tens of thousands of dirhams for pristine examples of first-issue notes. Visitors to the museum will learn about a time when Abu Dhabi had its own currency, different to the one used by Dubai and the northern Emirates.

The first dirham notes, introduced in 1973, were in denominations of AED 1, 5, 10, 20 and 100. Three years later the AED 1,000 note was released, the first issue being the most valuable note to collect at the museum. The first notes issued had both Arabic and English lettering, with various Emirates landmarks printed on them, similar to those in circulation today.

The UAE Currency Museum at the Central Bank is open daily from 9am to 3pm and is free to enter. Tours may be booked in advance, for a maximum number of 15 to 20 people.

DID YOU KNOW?

The Dirham was put into circulation for the first time on May 19, 1973.

b.Manarat Al Saadiyat

Manarat Al Saadiyat is a 15,400m² arts and culture centre located on Saadiyat Island. It houses three major gallery spaces, a central events gallery, and a 250-seat theatre. Visitors to the culture centre can see a large model of the island's developments including cultural, residential and leisure buildings. The site is dedicated to developing arts and culture in Abu Dhabi and is located within the Saadiyat Cultural District currently taking shape.

The galleries showcase art from all over the world, and are also used for regular exhibitions and lectures. The Abu Dhabi Art Fair is hosted there annually every November.

Manarat Al Saadiyat is free to enter and is open from 10am until 8pm every day, except during Ramadan when the opening hours are 9am to 2pm and 8.30pm to 11.30pm.

DID YOU KNOW?

Manarat Al Saadiyat means 'a place that provides enlightenment' in Arabic – quite fitting really!

c.Qasr Al Hosn

Abu Dhabi was founded in a location known as Qasr Al Hosn, which translates as “Palace” (Qasr) and “Fort” (Hosn) (Al Hosn). Abu Dhabi’s ancient district is also known as the White Fort or Old Fort.

Qasr Al Hosn was built in 1761 as a watchtower to guard the only freshwater well at that time by the orders of Sheikh Theyab bin Eissa, the leader of Bani Yas tribe. According to legend, two Bani Yas tribe members were out for gazelle hunting one day when Abu Dhabi was nothing more than an open field. They were thirsty and exhausted when they noticed a gazelle drinking. They tasted the water, and it was sweet. This is how the island came to be known as Abu Dhabi, which literally translates as “father of the gazelle,” and is often associated with the story of the gazelle leading the Bani Yas tribe to water.

After that, his son, Sheikh Shakhbout bin Theyab, relocated the ruling family from Liwa to Qasr Al Hosn since 1795. The expansion of Qasr Al Hosn which started in 1939, was the result of the first oil concession granted by Abu Dhabi’s ruler Sheikh Shakhbout bin Sultan Al Nahyan. Mohammed Ahmad Al Bana Al Bastaki was the mason contracted for the expansion. During restorations from 1976 to 1983, it was painted a dazzling white color. Plaster made of lime, sand, and crushed seashells covers the strong walls of Qasr Al Hosn, and since its founding in 1761, Qasr Al Hosn has witnessed all of Abu Dhabi’s historical events, from its early days as a fishing and pearling community to its current status as a safe and prosperous modern city.

Al Hosn, located in downtown Abu Dhabi, is the original historic urban block of the city. For nearly two centuries, Qasr Al Hosn served as the fortress, royal residence, and administrative headquarters of the Al Nahyan Rulers of the Emirate of Abu Dhabi. Today, it is home to a vast cultural experience including Qasr Al Hosn, Cultural Foundation, House of Artisans, Bait Al Gahwa, and a selection of restaurants and cafes. The Al Hosn site also houses a Musallah (or prayer room), an award-winning architectural ensemble which has been internationally recognised by architects, critics and academics alike. The building acclaimed the title of “Best Completed Religion Building” at the World Architectural Festival 2019 and was consequently shortlisted for “World Building of the Year” at the WAF awards in Amsterdam in 2019.

Source: https://www.instagram.com/almawrooth/p/Brfbw_-HQZ3/?img_index=1

Source: Qasr Al-Hosn, the Ruler’s Fort in Abu Dhabi. | [Library of Congress \(loc.gov\)](#)

Cultural Foundation

The Cultural Foundation was conceived in 1981 by the late H.H. Sheikh Zayed bin Sultan Al Nahyan, founding father of the United Arab Emirates, as a public institution with a mandate to foster and nurture cultural consciousness for all citizens. This building represented a new outlook on the role of culture in the modern UAE, with the introduction of the first National Library, a theatre and a multi-purpose exhibition hall. It quickly established itself not only as a beloved community gathering space, but also as a home of debate and exchange for artists, poets, and intellectuals.

One of Abu Dhabi's most prominent landmarks, it reopened to the public in September 2019, after being closed for the past decade due to renovation work. The centre for art and learning was closed in 2009 as part of extensive renovations to the Al Hosn site.

Currently it is run by the Department of Culture and Tourism – Abu Dhabi (DCT Abu Dhabi), which organises year-round programming of art exhibitions, world music, theatrical and children's events at the Foundation, supporting efforts to enrich Abu Dhabi's cultural scene and the emirate's continued growth as a global hub for arts, tourism, and leisure.

Source : <https://www.mediaoffice.abudhabi/en/arts-culture/cultural-foundation-launches-new-season-of-events-in-abu-dhabi/>

Al Hosn Festival

Al Hosn Festival is a living expression of Abu Dhabi, and an annual celebration of the emirate's heritage held at Al Hosn site. Visitors are invited to step back in time, immersing themselves in the traditions of the Emirati community, from the famous hospitality and food to experiencing first-hand the traditional clothing, customs, performances and crafts. Al Hosn is where Abu Dhabi's diverse communities come together to make unexpected discoveries, build connections with the past, and take part in Abu Dhabi's ever-evolving story.

Source: <https://abudhabiculture.ae/en/experience/heritage-festivals/al-hosn-festival>



Abu Dhabi Children's Library at the Cultural Foundation

The Abu Dhabi Children's Library is a state-of-the-art library designed to inspire and entertain youngsters. Spread over three floors, the 5,250 square metre space is divided into several age-appropriate, immersive social spaces and boasts three-dimensional learn/play spaces in which children can physically immerse themselves, becoming part of a story.

House of Artisans

A focal point for UAE's intangible heritage, House of Artisans is committed to the preservation and revitalisation of the intangible heritage of the Emirates. Located next to Qasr Al Hosn, it provides a platform for visitors to engage in specialised training courses, educational workshops, and public events, offering an immersive experience in traditional Emirati crafts. Local artisans showcase their expertise by bringing forth exquisite artworks, available for purchase as unique souvenirs. Functioning as a focal point for the conservation and exhibition of traditional crafts, the centre also facilitates the transmission of knowledge and skills essential for their perpetuation. Through a diverse array of events and workshops, the House of Artisans fosters interaction and skill exchange between traditional Emirati artisans and the community, thus contributing to the continuity of these invaluable practices.

Bait Al Gahwa

Located inside House of Artisans, Bait Al Gahwa is a space where the traditional ceremony of Emirati coffee making comes to life. A cultural experience involving the traditional preparation and presentation of Gahwa, or Arabic coffee, it presents each stage of preparing Gahwa from roasting, cooling, grinding, to brewing the coffee. Each stage, including the serving phase, has a distinctive technique, traditional tools, and etiquette unique to the UAE.



d.Hudayriyat Island

The island is dedicated to be the hub of high-end sporting facilities that add fitness-themed fun to its picturesque surroundings while promoting a healthy and active lifestyle.

Marsana Hudayriyat

The Marsana waterfront promenade offers fun and sunshine for everyone. Kids will love the dedicated splash park, swimming pool and play area. Hudayriyat beach is the ideal chilling spot, especially for watching exquisite sunsets, and if you're feeling active, there's an outdoor gym, a network of cycle paths, a skate park, beach volleyball, jet skis and banana boats. The sunny marina boasts a selection of restaurants and boutiques, plus there are several art installations and exhibitions to appreciate.

Surf Abu Dhabi

The newly launched Surf Abu Dhabi is the biggest and most advanced artificial wave facility in the world. The cutting-edge wave pool technology provides an experience of epic barrels and long rides tailor-made for surfers from different levels. It features the world's largest wave pool with the longest open barrel high performance wave to challenge elite surfers, and offering a variety of surfing experiences for anyone to enjoy.

Velodrome Abu Dhabi (coming in 2025)

Set to open in 2025, this will be the first UCI Category 1 indoor cycling track in the region, hosting international championships and all sorts of track-based tournaments. The exterior features a modern design and breathtaking panoramas with a rooftop track that is connected to the ground by a 600-metre cycling ramp, offering cyclists a 360-degree view of Hudairyat Island.



e.Saadiyat Cultural District

The Saadiyat Cultural District is an area of Saadiyat Island which has been dedicated to cultural and artistic institutions and attractions. It aims to draw in visitors from across the globe to a district that has the greatest concentration of cultural institutions. Located on the upper west area of Saadiyat Island, the cultural district has a land area of 2,800,000 square metres.

teamLab Phenomena Abu Dhabi

teamLab Phenomena Abu Dhabi will be an immersive, experiential journey through cutting-edge installations sitting at the intersection of art and technology. It is realised in collaboration with Tokyo-based art collective teamLab. It is set to be an inspirational space igniting curiosity, imagination and creativity in all who visit, populated with unparalleled installations that will be unique to Abu Dhabi, created through an extensive process of research and development.

Visitors will be asked to open their minds and embark on a journey through teamLab's new concept of environmental phenomena, which will offer a new perspective on the world around us. The featured artworks will be created and shaped by the environments which produce various phenomena. The purpose-built, 17,000sqm building, also designed by teamLab, plays an important role in allowing the artworks to evolve freely and organically, as if they were life-forms themselves. The experience will be unique to each visitor, changing with each visit, as they discover a place in which to endlessly explore and transcend the limits of their imagination. teamLab Phenomena is due to be completed by 2025.

<https://visitabudhabi.ae/en/campaign/teamlab>

National History Museum

The Natural History Museum Abu Dhabi will feature some of the rarest natural history specimens ever found on planet Earth. It will be a scientific research and teaching institution, as well as an educational resource for learning about the evolving story of our planet, aiming to ignite a life-long passion for the natural world in visitors of all ages.

Visitors will travel on a journey through time and space, from the beginning of the universe to a thought-provoking perspective into our Earth's future. A highlight of the new museum's collection will be the world-famous skeleton of 'Stan', the Tyrannosaurus rex, the Murchison Meteorite specimen, and other spectacular collections as part of its compelling curatorial vision, as well as fascinating experiences which will be created by a dedicated team in Abu Dhabi.

The museum will join a global community of natural history museums committed to public education and to the development and sharing of scientific research. Within the museum, the innovative scientific research facility will undertake studies in areas including zoology, palaeontology, geology, marine biology, molecular research (a DNA and proteomics), entomology and earth sciences. The primary aim will be to advance knowledge and increase understanding of our past, but also to create a think tank for future innovation and emerging technologies.

With a focus on exceptional specimens and immersive displays, the Natural History Museum Abu Dhabi galleries will take visitors on an inspirational journey back to the very beginning of time, narrating the evolution of our universe, the Earth's formation, and the history of life on our planet. Covering an area of more than 35,000 sqm, lead architects Mecanoo designed the Natural History Museum Abu Dhabi to resonate with natural rock formations, reflecting the museum's goal of improving understanding of and engagement with the natural world. The Natural History Museum Abu Dhabi is due to be completed at the end of 2025.

<https://abudhabiculture.ae/en/experience/museums/natural-history-museum-abu-dhabi>

f.Zayed National Museum

The Zayed National Museum, designed by Pritzker Prize-winning architect Lord Norman Foster, will be the national museum of the UAE. The site is located on the eastern edge of the Saadiyat Cultural District. The museum will tell the story of the late H.H. Sheikh Zayed bin Sultan al Nahyan, and explore the history of the UAE.

The museum will include a landscaped garden, forming a key part of the visitors' experience. The main gallery will be about Sheikh Zayed, and will include photographs and personal belongings of the Founding Father.

Visitors to the museum will learn about the changing culture of the UAE, Sheikh Zayed's love of the natural world, and how Arabic culture and inventions have influenced the rest of the world. It is expected to be opened in 2025.

DID YOU KNOW?

The building's towers were designed to invoke the image of a falcon's wings, a cultural icon of the UAE!

Further your knowledge

The museum's website:

www.zayednationalmuseum.ae

A video highlighting the life of Sheikh Zayed and the inspiration behind the museum:

www.youtube.com/watch?v=gtTuBof2tRw

Information on the architectural design of the area:

<http://www.fosterandpartners.com/projects/zayed-national-museum>



g.Guggenheim Abu Dhabi

Guggenheim Abu Dhabi will be located on a peninsula at the north-western tip of Saadiyat Island. The museum offers a transcultural perspective on art history – with a dedicated focus on art from West Asia, North Africa and South Asia (WANASA). The collection aims to contribute to a more inclusive and expansive view of modern and contemporary art.

Designed by Pritzker Prize-winning architect Frank Gehry, Guggenheim Abu Dhabi will be the largest of the Guggenheim museums. The architecture mimics the traditional Arabic “barjeel”, or wind tower, and references how the original inhabitants of the UAE adapted to the land and thrived – a connection point to the history of the UAE.

Visitors will view a collection of modern and contemporary art from the 1960s to the present day, composed of a variety of media, including works especially created for the site. Guggenheim Abu Dhabi’s collection will contribute to a more inclusive view of art history by emphasising the convergence of local, regional and international sources of creative inspiration. Guggenheim Abu Dhabi is committed to supporting artists in the region, and has been doing so through acquisitions, exhibitions, publications and public programmes in Abu Dhabi. The official opening is still to be announced.



h.Louvre Abu Dhabi

Louvre Abu Dhabi is a place to share and celebrate stories of cultural connections, and help visitors realise that we have more in common than we know. It is located in Abu Dhabi's cultural district on Saadiyat Island, and designed by Pritzker Prize-winning French architect Jean Nouvel. It was inaugurated in a special ceremony in November 2017 by Emmanuel Macron, French President, H.H. Sheikh Mohamed bin Zayed Al Nahyan, the President of UAE and the Ruler of Abu Dhabi, H.E. Mohamed Khalifa Al Mubarak, Chairman of the Department of Culture and Tourism- Abu Dhabi and other world leaders.

Anchored in the Middle East and enriched by the diversity of its surroundings, Louvre Abu Dhabi aims to shape new perspectives on the global history of art, and tell much-needed tales of exchange and tolerance in a connected world.

Through its innovative curatorial approach, the museum shows artworks from different cultures side by side, and builds understanding across cultures through stories of human creativity that transcend civilisations, geographies and times. The permanent collection, together with important loaned artworks from prestigious partners, allow visitors to journey from pre-history to the present day, and discover connections, points of exchange and differences.

Louvre Abu Dhabi hosts several international exhibitions each year. A Children's Museum nurtures curiosity and discovery through its themed exhibitions and workshops that are designed to engage children and their families. In addition, Louvre Abu Dhabi offers tailored educational and cultural programmes for schools, universities, adults, and family groups.

Since opening in 2017, Louvre Abu Dhabi has become a unique space that brings people together, welcoming over two million visitors from around the world who have come to enjoy the museum's rich cross-cultural collection, iconic dome, ground-breaking international exhibitions and a range of cultural programmes for people of all ages and backgrounds.

Visitors can enjoy a short break at the Museum's Café, or dine at Fouquet's, an elegant fine dining French brasserie style restaurant, while enjoying the magnificent views. For those who love to shop, the museum's boutique features a selection of art books, souvenirs, postcards, and designer items.

Visitors can enjoy a short break at the Museum's Café, or dine at Fouquet's, an elegant fine dining French brasserie style restaurant, while enjoying the magnificent views. For those who love to shop, the museum's boutique features a selection of art books, souvenirs, postcards, and designer items.

Museum hours are:

Tuesday - Sunday | 10:00 am – 6:30 pm

The museum is closed on Monday

Last entry time slot is 5.30pm, visitors must depart at 6.30pm

General admission tickets are AED 63 (including VAT). Reduced ticket rates are available for UAE school teachers, college lecturers and university faculty members, UAE military, auditorium/workshop ticket holders. Admission is free for those who are under the age of 18, UAE senior Emiratis and residents, People of Determination with one companion, Louvre Abu Dhabi Art Club members with one guest, Youth and Teacher Pass holders, ICOM/ICOMS Card holders, journalists and their companions.

<https://www.louvreabudhabi.ae/en/uae>





DID YOU KNOW?

The domed roof of Louvre Abu Dhabi is constructed from 7,850 unique stars, repeated in different sizes and angles on each of its 8 steel layers. These pierced-steel stars form unique patterns allowing sunlight to pass through to the spaces below, forming a 'rain of light' effect that changes as the sun moves across the sky during the day. The dome weighs approx. 7,500 tons, equal in weight to the Eiffel Tower in Paris.



i.UAE Pavilion

The UAE Pavilion was inspired by the sand dunes of the UAE, and was designed by Foster and Partners. It was originally built for the 2010 Shanghai Expo, which had the theme 'Better Cities, Better Lives'. The building was designed to be easily dismantled to make relocation possible when the Expo ended. It has since made a lengthy journey to reach Abu Dhabi to become the UAE Pavilion. The construction of the building in Saadiyat was completed in 2011 when it opened to the public.

Located next to the Manarat Al Saadiyat building, the UAE Pavilion is over 20 metres high and has total footprint of 3,452m². The components of the building filled over 50 containers, with some of the largest parts being transported as open-sea freight due to their weight of almost 60 tonnes.

Berklee Abu Dhabi is located in the UAE Pavilion. The pavilion was newly renovated with 42,000-square-foot arts education centre on Saadiyat Island. It is the first Middle East outpost of Berklee College of Music, the preeminent institute of contemporary music and the performing arts. It offers world-class educational experiences through workshops, masterclasses, courses, ensembles, and labs led by world-renowned artists and instructors. It also host live performances from students, alumni and global artists. It has a performance space, a recording studio, rehearsal studios, practice rooms, ensemble rooms and a multimedia tech lab.

DID YOU KNOW?

The UAE Pavilion's trip from the banks of Huangpu River in China to Saadiyat Island was a long one by any measure - more than 6,500 kilometres, or equivalent to eight and a half hours by jet, or a month at sea on a slow boat!

Further your knowledge

Architect's webpage: <https://www.fosterandpartners.com/projects/uae-pavilion-shanghai-expo-2010>

j.Union Square

Union Square is located near the Qasr Al Hosn in Abu Dhabi city centre. In an area once considered the very heart of the city, this is an iconic and truly stunning square which now embodies modern Emirati cultural statues. It is also known as Culture Square, or Etihad Square (sometimes spelled as Al Ittihad Square).

There was a large cannon sculpture on display in the square, which also gave it the nickname, Cannon Square. However, the cannon sculpture was replaced with traditional symbolic monuments as part of the renovations. There are now with five white statues which glisten in the sun between two lanes of traffic. The white stone statues include a traditional Arabic coffee pot (dallah), an incense burner (mabkhara), and a traditional Arabic rosewater sprinkler (marrash). There are also statues of a fort representing strength and power, and a food cover made from palm fronds (mechabba), signifying the UAE's heritage. This area was where Abu Dhabi's original souk was located, and also contained the city's first bus station, clocktower and one of its most elaborate mosques, Al Fahimi.

DID YOU KNOW?

The square is often used as a filming location for local and international movies!



k.Wahat Al Karama

“Our martyrs will remain our source of pride at all times. Their heroic deeds go down in the annals of history as a source of inspiration for all sincere deeds made to ensure our country’s glory, stability and progress toward a brighter future.”

H.H. Sheikh Mohammed bin Zayed Al Nahyan, the President of UAE, and Ruler of Abu Dhabi.

It was opened on 30 November 2016, and is located between the Sheikh Zayed Grand Mosque and the General Headquarters of the UAE Armed Forces. The name Wahat Al Karama means ‘the oasis of dignity’. The site itself consists of four areas:

- Visitor Centre
- The Memorial Plaza
- The Memorial
- The Pavilion of Honour

The Memorial is made up of 31 huge tablets covered in aluminium which lean on each other. These symbolise the unity, solidarity and mutual support that bind together the leadership and citizens of the UAE with the servicemen and women who protect them.

Quotes and poems from the late H.H. Sheikh Zayed bin Sultan Al Nahyan, the late H.H. Sheikh Khalifa bin Zayed Al Nahyan, H.H. Sheikh Mohammed bin Zayed Al Nahyan, and H.H. Sheikh Mohammed bin Rashed Al Maktoum are inscribed on the panels. Visitors can also read the Pledge of Allegiance which is engraved on a long spine at the memorial. The spine is actually supporting the other panels, which symbolises the importance of soldiers in protecting and supporting the country.

Source: <http://www.thenational.ae/uae/government/leaders-honour-uaeheroes-at-wahat-al-karama-memorial>

The Pavilion of Honour is an open-air geometric building. Its internal walls are covered in aluminium plates, which are inscribed with the name, rank, location, and martyr date of each of the UAE’s heroes. The illuminated plates are made from reclaimed armoured service vehicles from the UAE Armed Forces. The martyrs are in chronological order where visitors can recognise the first martyr in the UAE.

The roof of the building is constructed from eight slabs, seven of which symbolise the Emirates of the UAE, with the additional slab symbolising the heroes themselves. Seven large transparent glass panels, which also represent the seven Emirates, can be seen at the centre of the Pavilion surrounded by a pool of slowly moving water. On the front and back of each glass panel is the Pledge of Allegiance of the UAE Armed Forces, legible from whichever side the visitor reads it.

Memorial Plaza and offers clear views of the memorial and the neighbouring Grand Mosque. The plaza includes an amphitheatre which can seat over 1,200 people. A shallow pool in the centre of the Plaza reflects the memorials and provides the perfect location reflecting the Grand Mosque, and part of the memorial. The Plaza is used annually on 30 November for the Commemoration Day ceremony to remember and honour those who have given their lives for the UAE.

Wahat Al Karama is free to enter. The Visitor Centre is open daily from 9am until 10pm. Opening hours can vary during visits from official delegations, national days and special events. Dress code is strictly 'modest'.

Tours are available in both Arabic and English. These take place at 11am and 5pm each day. Tourists can book tours online, and choose their preferred time from 10:00 am to 6:00 pm.



DID YOU KNOW?

The Wahat al Karama Memorial and Pavilion of Honour were designed by the London-based artist Idris Khan, who was born in Birmingham, United Kingdom, in 1978. Since completing his master's degree with distinction in research at the Royal College of Art in London in 2004, Idris has received international acclaim for his minimal, yet emotionally charged photographs, videos and sculptures. The Wahat Al Karama project went from design approval to delivery within just nine months!

a. Abu Dhabi Corniche

The Corniche is an 8-km pedestrianised walkway and cycleway that runs alongside Corniche Road (also known as 1st Street). It is one of the best-known areas in Abu Dhabi, and popular for residents and tourists alike for its water-sports activities including jet skis and inflatable rides, as well as football and volleyball on the beach. Also, for water-sports enthusiasts, Abu Dhabi Parasail offers parasailing activity, including a number of other adrenaline-fuelled water activities, such as banana boats, donuts and an Abu Dhabi-first rotating disco boat.

The history of the Corniche dates back to the 1960s after the discovery of oil in Abu Dhabi. A number of top hotels – including The Sheraton Hotel and Resort, Al Ain Palace Hotel, and the Hilton Abu Dhabi (now re-branded to Radisson Blu Hotel & Resort Abu Dhabi Corniche) – were built to house the influx of business people, transforming the city from a fishing and pearling village to a modern metropolis. Currently, other top hotels located along the Corniche are Emirates Palace, Conrad Abu Dhabi Etihad Towers, St. Regis Abu Dhabi and Sofitel Abu Dhabi Corniche. The current pathway was built on reclaimed land between 2003 and 2004. Before this was built, these buildings sat on the edge of the Arabian Gulf.

The Corniche features children's play areas, separate cycle and pedestrian pathways, cafés and restaurants, and the Corniche beach – a Blue Flag, family-friendly beach park patrolled by lifeguards. Visitors can find plenty of places to hire bikes for cycling.

DID YOU KNOW?

In days gone by, pearl fishermen and traders lived in this area as it was close to the port.

The area is famous for hosting many celebrations and events. It is especially popular during UAE National Day celebrations on the second of December each year, when the walkway fills up with thousands of people, parades, entertainers, concerts and fireworks. During the Abu Dhabi Grand Prix in November, it hosts the Formula 1 FanZone™ with giant TV screens showing the race as well as concerts and creative workshops to make the most out of this internationally renowned sporting event. Also, amazing fireworks light up the skyline of Abu Dhabi during the New Year's Eve and Eid celebrations.



b.Emirates Park Zoo and Resort

Emirates Park Zoo and Resort was the first private zoo in the UAE, having opened in 2008. It is located in Al-Bahia, a north-east suburb approximately 35kms from Abu Dhabi City.

The zoo currently houses an incredible 1,700 animals in a number of different zones including Snake Alley, Flamingo Park and Giraffe Park. Visitors can enjoy feeding camels, ostriches, sheep and goats at the Petting Zoo, and watching lions, cheetahs and dozens of zebras in the Predators and Wild Animal enclosures.

Monkeys and baboons are on show in Primate Parade while lizards, pythons, geckos, water dragons and tortoises can be seen in the Reptile House. In the Bird Park there are owls, Harris hawks, falcons, eagles, peacocks and parrots. The Wildlife Park offers a view of elephants, cheetahs, bears, crocodiles, lions, leopards, gazelle, Arabian oryx and tigers – including a pair of rare white tigers.

The Aquarium houses hundreds of magnificent and colourful fish, sharks, damselfish and stingrays. Water-based entertainment is available during daily sea lion shows where three resident sea lions juggle, breakdance and even stand on their flippers!. As well as animals, the zoo has a resident band from Ghana who drum and play African music to get visitors in the mood to enjoy their experience. Visitors can learn even more about the many species on show by visiting the large animal theatre. Both animals and visitors are kept cool all year round thanks to a unique misting system.

Emirates Park Zoo offers visitors the opportunity to experience a zipline and climbing as part of its adventure activities. The zipline allows visitors to fly and enjoy a bird's eye view of the zoo and its surroundings. The climbing activity is a challenging and exciting way to test your physical abilities and explore different parts of the zoo.

For a closer and more intimate encounter, there are VIP experiences that visitors can book, like breakfast with parrots or giraffes, brunch with leopards and even dinner with elephants.

Source: <https://www.emiratesparkzooandresort.com/fun-activities>

The zoo is open from 9am – 9pm from Friday to Thursday, entry is free for children under two years old. For up-to-date entry prices and packages, please visit the website at: <https://www.emiratesparkzooandresort.com/tickets>

The Emirates Park Resort is connected to the zoo and offers 68 air-conditioned rooms and four suites. All accommodation options have balconies overlooking the zoo, cave or garden. It is a traditional Arabic designed resort suitable for families.



c.Ferrari World

Abu Dhabi

Ferrari World is the world's first Ferrari-branded theme park, and is open 365 days a year. It is located on Yas Island and covers an incredible 86,000m². The Ferrari story is brought to life by each area and attraction in the Park. An example is Cinema Maranello and its film, which captures the speed, power and freedom of a Formula 1 car.

The theme park features rides, attractions, live shows and experiences, all inspired by Ferrari. It was developed over three years between 2007 and 2010. During their trip to the park, visitors can also enjoy shopping at the world's biggest Ferrari store, which sells clothing, toys, souvenirs and everything branded by Ferrari. In December 2010, the theme park welcomed 2,000 VIP guests, including senior government officials and F1 drivers, Fernando Alonso and Felipe Massa. The VIPs were given a spectacular show which preceded an opening ceremony by the President, H.H. Sheikh Mohammed bin Zayed Al Nahyan, who at the time was Crown Prince of Abu Dhabi and Deputy Supreme Commander of the UAE Armed Forces.

Rollercoasters on offer include:

- Turbo Track –It has back-to-back seats, a vertical climb and an amazing zero-gravity fall.
- Flying Aces – inspired by Count Francesco Baracca, the 'ace of aces' aviator, this plane-themed rollercoaster was installed in 2016. Riders enter a military biplane and rise up 63 metres at a 51-degree incline. During the ride, they hit speeds of up to 120kmper hour, and get to experience the world's highest roller-coaster loop.
- Fiorano GT Challenge – this roller-coaster was created in 2010, and allows riders to race each other on a circuit of parallel tracks in a replica of a Ferrari F430 Spider. The circuit is full of twists and turns where riders will reach speeds of up to 95km per hour.
- Formula Rossa – this is the world's fastest roller-coaster and was installed in 2010. Riders travel from 0 to 240km per hour in less than five seconds.

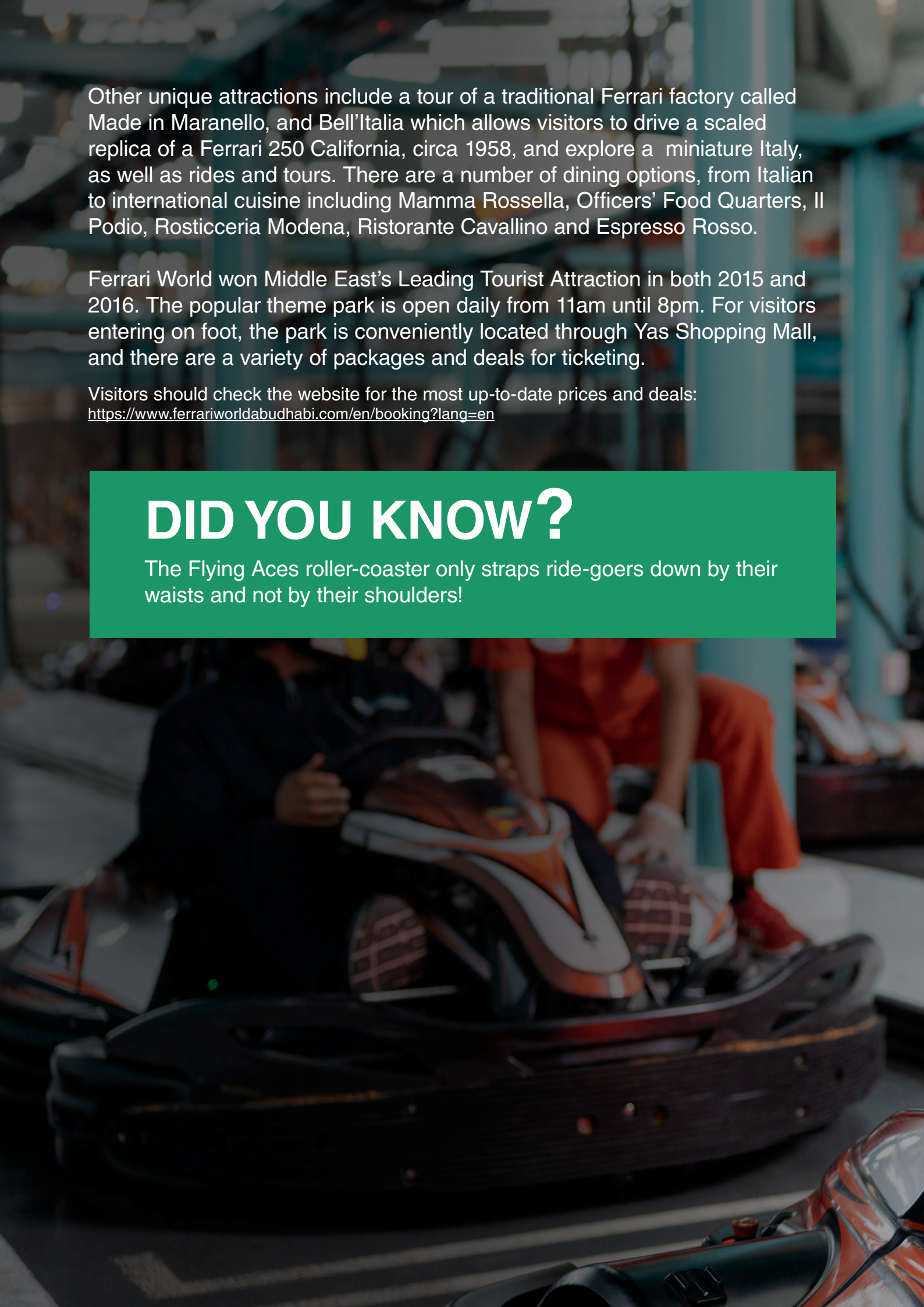
NOTE: THIS RIDE IS CLOSED INDEFINITELY

Other rides include: an interactive motion simulator called Scuderia Challenge; a flight simulator inspired by the legendary open-road endurance Mille Miglia called Viaggio in Italia; a daring 4D ride called Speed of Magic; a Formula 1 virtual simulator called Driving with the Champion; and a 290-metre-long track inspired by the Yas Marina Circuit at the Karting Academy.

Children can also enjoy a whole host of rides and activities, subject to a few age and height restrictions:

- Tyre Twist offers a Formula 1 twist on a traditional teacup ride
- Khalil's Car Wash is an exciting interactive children's playground
- Benno's Great Race, a new family race in which participants help Benno win
- Junior Training Camp, a climbing area
- Ferrari driving school called Junior GT/Junior GP



A background image showing a dark-colored roller coaster car with orange and white accents. Several passengers are visible inside the car, some wearing orange shirts. The car is on a track, and the background is slightly blurred, suggesting a theme park setting.

Other unique attractions include a tour of a traditional Ferrari factory called Made in Maranello, and Bell'Italia which allows visitors to drive a scaled replica of a Ferrari 250 California, circa 1958, and explore a miniature Italy, as well as rides and tours. There are a number of dining options, from Italian to international cuisine including Mamma Rossella, Officers' Food Quarters, Il Podio, Rosticceria Modena, Ristorante Cavallino and Espresso Rosso.

Ferrari World won Middle East's Leading Tourist Attraction in both 2015 and 2016. The popular theme park is open daily from 11am until 8pm. For visitors entering on foot, the park is conveniently located through Yas Shopping Mall, and there are a variety of packages and deals for ticketing.

Visitors should check the website for the most up-to-date prices and deals:
<https://www.ferrariworldabudhabi.com/en/booking?lang=en>

DID YOU KNOW?

The Flying Aces roller-coaster only straps ride-goers down by their waists and not by their shoulders!



d.Yas Marina Circuit

Yas Marina Circuit is the United Arab Emirates' most exciting sporting and entertainment multi-purpose venue. Located on Yas Island, the circuit is home to the annual Formula 1 Etihad Airways Abu Dhabi Grand Prix, in addition to the extensive year-round programme of professional and grassroots motorsport events and experiences. The circuit has emerged as a thriving hub for entertainment and community events in the UAE. It is a leading MICE venue, regularly hosting a diverse range of corporate meetings, conferences and events. Whether you want to experience the thrill of karting at Yas Kartzone, drive an Aston Martin GT4 on the F1® circuit, improve your fitness levels at TrainYas, or participate in one of the many sporting events, Yas Marina Circuit truly is The Meeting Place of Champions.

Yas Marina Circuit is dedicated to growing a sustainable motorsport community in the country. With its state-of-the-art racing facilities, top motorsport instructors, and extensive annual programme of professional and amateur motorsport events. It fosters understanding and interest in the sport by providing a platform for drivers to learn, develop and evolve.

Drivers wanting to try out the circuit themselves can visit the Yas Racing facility which offers visitors driver experiences, passenger experiences, private driving tuition programmes, and racing license courses. There is also the Yas Kartzone for those wanting to try a karting challenge.

Yas Marina Circuit is the living, beating heart of health and fitness within Abu Dhabi. Over 200,000 people visit Yas Marina Circuit each year to walk, cycle, run, swim and generally keep fit and healthy. With weekly mixed gender and female-only programmes, as well as annual events to keep people motivated to live a healthy lifestyle, it serves as a meeting place for families, friends, fans of motorsport and athletes alike throughout the year.

For up-to-date information on pricing for all the activities and experiences available at the Yas Marina Circuit, please visit:

<https://www.yasmarinacircuit.com/en/experience?tab=openyas>

DID YOU KNOW?

The Abu Dhabi Grand Prix is Formula 1's only twilight race!



e.Yas Waterworld

Yas Waterworld is located on Yas Island, just to the west of Ferrari World Abu Dhabi. Yas Waterworld is a water park which covers an area the size of approximately 15 football pitches and houses 43 rides, slides and attractions including five one-of-a-kind rides which can only be found at this location. The design of the park is inspired by the local tradition of barjeel 'wind towers' and pearl diving.

The unique water park first opened in 2013, and has a 'Legend of the Lost Pearl' theme based on the culture and heritage of Abu Dhabi. The rides and attractions tell the story of a young Emirati girl, Dana, on a mission to find a legendary pearl.

The rides are categorised under four thrill levels: Shaheen's Adrenaline Rush, Sultan's Young Fun, Dhabi's Exciting Adventure, and Hamloom's Moving & Grooving.

Shaheen's Adrenaline Rush includes the world's first and largest hydromagnetic-powered waterslide at over 235 metres long, called Dawwama. Other rides within this thrill level include a flow-boarding ride called Rush Rider, a six-person water coaster ride called Falcon's Falaj, and a free-fall speed slide called Jebel Drop. Sultan's Young Fun area offers family pool play areas and slides especially for very young children.

Abu Dhabi's Exciting Adventure houses another world-first for the water park. Bandit Bomber is an interactive, 550-metre water roller-coaster with on-board water and laser effects. Other rides on offer include water slides, and a fast-flowing wave river ride called Yadi Yas.

Hamloom's Moving & Grooving features a family river ride, a gentle wave pool as well as dedicated spray cannon and water balloon areas.

Visitors can also enjoy shopping at the souq or learn more at the exhibitions about pearl diving. Dining options include: ice cream venues; Salma's Snack Shack for juices and smoothies; Dana's Diner for quick eats; Chubby's kitchen for a sit-down meal; and Al Wa'Ha Cabanas for VIP service for four or six guests.



The park is open daily with seasonal opening hours as listed below:

- **November to March:** 10am - 6pm
- **April to May:** 10am - 7pm
- **June to August:** 10am - 8pm
- **September to October:** 10am - 7pm

For more updated timings and Ladies' Nights schedule, please visit: <https://www.yaswaterworld.com>



DID YOU KNOW?

Yas Waterworld is going through an expansion which will increase guest capacity by 20 per cent, with the introduction of 18 new rides and attractions and 3.3km of slide sections.

f.Warner Bros. World Abu Dhabi

Warner Bros. World Abu Dhabi is the world's first ever Warner Bros. branded indoor theme park, located on Yas Island. The park brings to life fan-favorite DC superheroes like Batman, Superman and Wonder Woman, alongside beloved animation characters from Looney Tunes and Hanna-Barbera such as Tom and Jerry, Bugs Bunny, Scooby-Doo and The Flintstones, all under one roof for the first time in the region.

At Warner Bros. World Abu Dhabi, guests are transported to six immersive lands, including Warner Bros. Plaza, DC Entertainment's Metropolis and Gotham City, as well as Warner Bros. Animation's Cartoon Junction, Bedrock, and Dynamite Gulch. The Park features a total of 29 state-of-the-art exhilarating rides, interactive family-friendly attractions, and unique live entertainment, for an unparalleled one-of-a-kind experience.

Harry Potter Themed Land - Warner Bros. World Abu Dhabi

It was announced at the end of 2022 that a Wizarding World of Harry Potter is to open in Abu Dhabi.

Located at Warner Bros. World, fans of Harry, Ron, Hermione and the clan are highly anticipating the opening of the magical theme park. It will invite fans to step inside iconic locations from the wizarding world, seen in an all-new way.

Source: <https://www.timeoutabudhabi.com/news/harry-potter-theme-park-abu-dhabi>

Source: <https://www.wbworldabudhabi.com/en/explore-the-lands/harry-potter>

Source: <https://whatson.ae/2023/10/harry-potter-theme-park-in-abu-dhabi/>

Quick Facts

- 29 Exhilarating rides and attractions
- 6 shows and over 35 DC and Animation live characters
- 20 distinctive dining experiences
- 22 shopping experiences

Shopping

Guests can take home a part of the experience when they visit one of the many shops that feature souvenirs and keepsakes inspired by the characters at Warner Bros. World Abu Dhabi.

Lands

Warner Bros. World Abu Dhabi is divided into six immersive lands:

1. Warner Bros. Plaza

The Art Deco-inspired architecture of Warner Bros. Plaza celebrates the Golden Age of Hollywood, and all things Warner Bros., acting as the portal to the rest of the park. The streets of the Plaza are lined with restaurants, cafes and one-of-a-kind themed shopping outlets.

2. Metropolis

Known as the City of Tomorrow, Metropolis is a bright, bustling, modern urban centre evoking shining idealism through a blend of flowing, majestic lines, soaring structures and inspiring color palettes. The Manhattan-like skyscraper city mixes 1930s Streamline Modern styling with 21st century state-of-the-art materials.

Stepping through the southwest transition tunnel from Warner Bros. Plaza, guests get their first glimpse of the majestic skyline of Metropolis silhouetted against the eternal sunset sky. The Avenue of Tomorrow curves ahead, lined with shining building facades that stretch up toward the sky. Above and beyond the facades is a sweeping skyline backdrop filled with skyscrapers that bear names such as LexCorp, Queen Industries and S.T.A.R. Labs.

This gleaming urban cityscape is filled with heroic optimism, and is kept safe from villainous activity by Superman and the superheroes of the Justice League. The Daily Planet is where Clark Kent works along with fellow reporter, Lois Lane.

Characters:

This inspiring city is home to Superman, Wonder Woman, Aquaman, Green Lantern, The Flash and the Teen Titans

3. Cartoon Junction

Animations are where all childhood memories come to life. Warner Bros.' most iconic characters and animated worlds can be discovered here.

Home to animated stars like Bugs Bunny, Tom and Jerry and Scooby-Doo, this bright and exciting area of Warner Bros. World Abu Dhabi is filled with colour and year-round "sunny skies" created through unique overhead lighting "clouds" in a stylised cartoon sky. Cartoon Junction offers something for everyone, from spinning roller coasters to amazing interactive dark rides with each new attraction putting them "in the cartoons" in fun and inventive new ways.

If you're looking for a game of cat and mouse, then journey into Cartoon Junction. Here you will spot Tom and Jerry up to their usual hijinks. Take a ride on Tom and Jerry's Swiss Cheese Spin and you'll be right in the middle of their epic chase. If mystery is your thing, then follow Scooby-Doo and the gang – Shaggy, Fred, Velma and Daphne – as they seek out clues and solve mysteries in Scooby-Doo: The Museum of Mysteries ride.

Characters:

This land is home to: Bugs Bunny, Daffy Duck, Tweety, Sylvester, Tasmanian Devil (Taz), Pepe Le Pew, Elmer Fudd, Scooby-Doo, Shaggy, Velma, Daphne, Fred, Tom and Jerry and Spike and Tyke.

4. Gotham City

Gotham City is home to its favorite billionaire Batman, who has vowed to crush the sinister criminal underworld that lurks deep beneath this legendary urban landscape. The Caped Crusader has taken matters into his own hands after the unfortunate death of his parents many years ago. Today, he devotes his entire family inheritance to stopping all of Gotham City's bad guys.

Characters:

This land is home to Batman, The Riddler, The Joker, Catwoman, Harley Quinn, Mr. Freeze, and the Penguin.

5. Dynamite Gulch

Dynamite Gulch is an animated storyland where guests will encounter the famed duo Wile E. Coyote and the Road Runner. Guests can experience Wile E. Coyote and the Road Runner's dizzying dash firsthand, when they hop aboard the thrilling Fast and Furry-ous roller coaster.

Characters:

This land is home to Wile E. Coyote, Road Runner, Marvin The Martian, Yosemite Sam, and the Jetsons.

6. Bedrock

Yabba-Dabba-Doo! This age-old land powered by birds and dinosaurs is home to everyone's modern stone-age family, The Flintstones. Take a cruise 'right out of history' on The Flintstones Bedrock River Adventure, where a family-friendly boat ride drops you in the middle of a prehistoric suburbia.

Characters:

This land is home to The Flintstones and The Rubbles, along with Dino and The Great Gazoo.



g.CLYMB™ Abu Dhabi

Located in the heart of Yas Island, CLYMB™ Abu Dhabi is the world's ultimate adventure hub offering world-class skydiving and climbing experiences.

Whether beginners or experienced skydivers and climbers, CLYMB Abu Dhabi offers a first-of-its-kind experience for guests of all ages (with an age limit of three years and above for skydiving and four years and above for climbing).

Guests are guided every step of the way with the help of highly skilled instructors. Whether conquering a new flying position or tackling the highest wall, CLYMB Abu Dhabi's instructors help guests progress to the next level, taking into consideration their level of experience and comfort.

CLYMB Abu Dhabi houses two record-breaking attractions: the Indoor Skydiving Flight Chamber and the indoor climbing wall The SUMMYT. CLYMB Abu Dhabi houses the World's Largest Indoor Skydiving Flight Chamber at 10 metres (32 feet) in width and 32 metres (104 feet) in height. CLYMB Abu Dhabi is home to the region's tallest indoor climbing wall at 42 metres (138 feet).



CLIMBING EXPERIENCES AT CLYMB ABU DHABI

The Boulder – Offers new learners the opportunity to climb a 3-metre (10 foot) wall to begin practicing their skills.

The Warm-up Wall – The perfect wall for those new to climbing or those who are warming up to tackle more challenging levels. At a height of 6 metres (20 feet), this climbing wall is the perfect opportunity to practice belaying or become more familiar with the auto belay device without having too much height to contend with.

The Intermediate – Nearly double the height of The Beginner, this wall offers harder routes for those looking to take on more of a challenge, equipped with auto belay devices.

The Advanced Wall – At 22 metres (72 feet) this wall offers experienced climbers a chance to test their skills, where they can practice techniques and top rope climbing in preparation for The SUMMYT.

The SUMMYT – The region's tallest indoor climbing wall reaches up to 42 metres (138 feet), nearly double the height of The Advanced Wall. The SUMMYT is also a top rope wall, where beginners and experts alike can try out their potential. Climbers using The SUMMYT wall will have full access to all the walls that CLYMB Abu Dhabi offers.

SKYDIVING EXPERIENCE

With three levels, CLYMB Abu Dhabi offers experiences for first-time flyers, intermediate flyers and skilled flyers, making the experience accessible to guests of all skill levels.

Flight instructors will take guests through safety measures and teach them body control techniques to enable them to enjoy the full flight experience.

The attraction's flight instructors remain with guests at all times within the flight chamber itself.



4.1 Sustainable Tourist Attractions

a. Al Wathba Wetland Reserve

Al Wathba Wetland Reserve is a five square kilometre wetland area located 40km southeast of Abu Dhabi City, between Musaffah and the Abu Dhabi - Al Ain Truck Road. The reserve was originally established by the late H.H. Sheikh Zayed bin Sultan Al Nahyan in 1998, and has been open since 2014.

It contains a series of shallow and natural lakes and wetlands, sand flats (known as sabkhas), and dunes. It is the first site in Abu Dhabi to be protected by law and was declared a Ramsar site in 2013 under the Ramsar Convention to which many countries worldwide have signed up. This recognises the fact that it is a wetland of international importance.

The reserve plays an important role as a home and stop-off point for more than 250 species of birds. There is a resident flamingo population at the reserve all year round. They are joined by more than 4,000 migratory flamingos between autumn and spring each year. An impressive 231 flamingo chicks were hatched at the reserve in 2013. Other bird life at the reserve includes eagles, the black-winged stilt and the endangered sociable lapwing. Visitors can also spot an assortment of other animals including dragonflies, damselflies, spiny-tailed lizards, white desert gerbils, hedgehogs, hares, and foxes.

There is also a vast array of aquatic life in the wetlands alongside 37 different plant species. Visitors can view the wildlife close up by visiting the specially-made bird hide – a wooden hut with long narrow openings allowing an unrivalled view of the animals in their natural habitat. Alternatively, there are two self-guided walking trails which are well signposted, offering a shorter 1.5km route and a longer 3km route near to the flamingo colonies.

The reserve has a Visitor Experience Centre where visitors can watch a short film about the importance of the reserve and its history. Facilities like toilets and visitor parking are also available. The reserve is free to enter, but is only open seasonally from mid-October up until May due to the breeding season. Opening times are available on the website after reopening for the winter.

Free tours around the reserve are available, but pre-booking is essential to help minimise the impact on the reserve, and preserve the vegetation there. Visitors are advised to wear long-sleeved, light tops and long trousers with a hat or head covering for comfort and practicality while exploring the reserve.

DID YOU KNOW?

The greater flamingo chicks are born a grey colour and only turn pink when they are two years old!

b.Mangrove National Park

Mangrove National Park is located just outside Abu Dhabi City centre on Sheikh Zayed bin Sultan Street. The park is hailed as one of Abu Dhabi's most important ecological features, and is protected through a government order by the Environment Agency Abu Dhabi (EAD). It consists of a dense mangrove forest stretching more than 19km². Mangrove, known in Arabic as qurm, is a strong shrub or tree that grows in salt water, and has adapted to living in severe coastal conditions. Abu Dhabi has approximately 70km² of mangrove along its coast, which accounts for almost 75% of the total mangrove forest area in the UAE. As well as mangrove forests, the park also has salt marshes, mudflats and a variety of important algae populations. It is home to hundreds of bird, plant and other species.

There are currently more than 60 species of birds feeding and nesting in the park, and many types of fish, shellfish and crabs can be found here. The park provides a protected sanctuary for turtles, dolphins and dugongs, a medium-sized marine mammal, and Mangrove National Park offers a calm and quiet escape from the hustle and bustle of Abu Dhabi City.

If visitors wish to explore the mangroves, there are multiple options starting from stand-up paddleboarding, kayaking, or hopping on a private boat tour led by licensed and ecologically responsible tour operators such as Noukhada and Al Mahara Diving. Information on these operators can be found on the Environment Agency website at:

<https://www.ead.gov.ae/en/experience-green-abu-dhabi/places-to-go/mangrove-national-park>



c.Masdar City Project

The Masdar City Project is located 17km southeast of Abu Dhabi City next to the Zayed International Airport. It is the emirate's 'city of the future', and aims to become the world's most sustainable eco-city. The project is funded by the Government of Abu Dhabi, and is led by Masdar, a subsidiary of the Mubadala Development Company.

The project was conceived in 2006, and construction began in 2008. Construction of the city was delayed by the world economic slump by 2010. Although much of the infrastructure was in place, only six buildings were finished and occupied, and the project now aims to be completed by 2030. The city will be a model for an environmentally friendly urban area which will have a variety of residential, commercial and industrial uses. It will show how places can become heavily built up, but, at the same time, dramatically reduce the use of energy and water and minimise waste. This will lower the city's carbon footprint and increase what is known as its 'greenprint'.

The Masdar Institute of Science and Technology (MIST), part of the Khalifa University of Science & Technology, is a graduate research university located at the centre of the project. The institute works solely on energy and eco-friendly solutions. All businesses within Masdar City will have a focus on protecting the environment.

A number of businesses are already present within the city. These include:

- The Headquarters of the International Renewable Energy Agency (IRENA)
- General Electric
- Mitsubishi
- Schneider Electric
- The Global Green Growth Institute
- General Electric Ecomagination Centre



The city also houses the Middle East headquarters of Siemens, the electrical giant. Their building, which was designed by architects Shepherd Robson, contains a 'wind tunnel' that funnels air up from the plaza below to the rooftop, and then directs a cool breeze through the narrow streets and alleys surrounding the building. Each building in Masdar City is constructed with low-carbon cement and utilises aluminium that is 90% drawn from recycled sources. It is designed to reduce energy and water consumption by at least 40%.¹² This eco-friendly structure was one of the first in the region to receive the highest Leadership in Energy & Environmental Design (LEED) 'Platinum' award. As well as receiving awards, the city also manages one – the Zayed Future Energy Prize. This is an annual award to recognise excellence in renewable energy and sustainability. The Prize was established by the leadership of the UAE and was launched in 2008. It represents the late Founding Father's vision to support environmental, social and economic sustainability as an important part of the UAE.

Source: <https://visitabudhabi.ae/en/what-to-see/national-attractions/masdar-city>

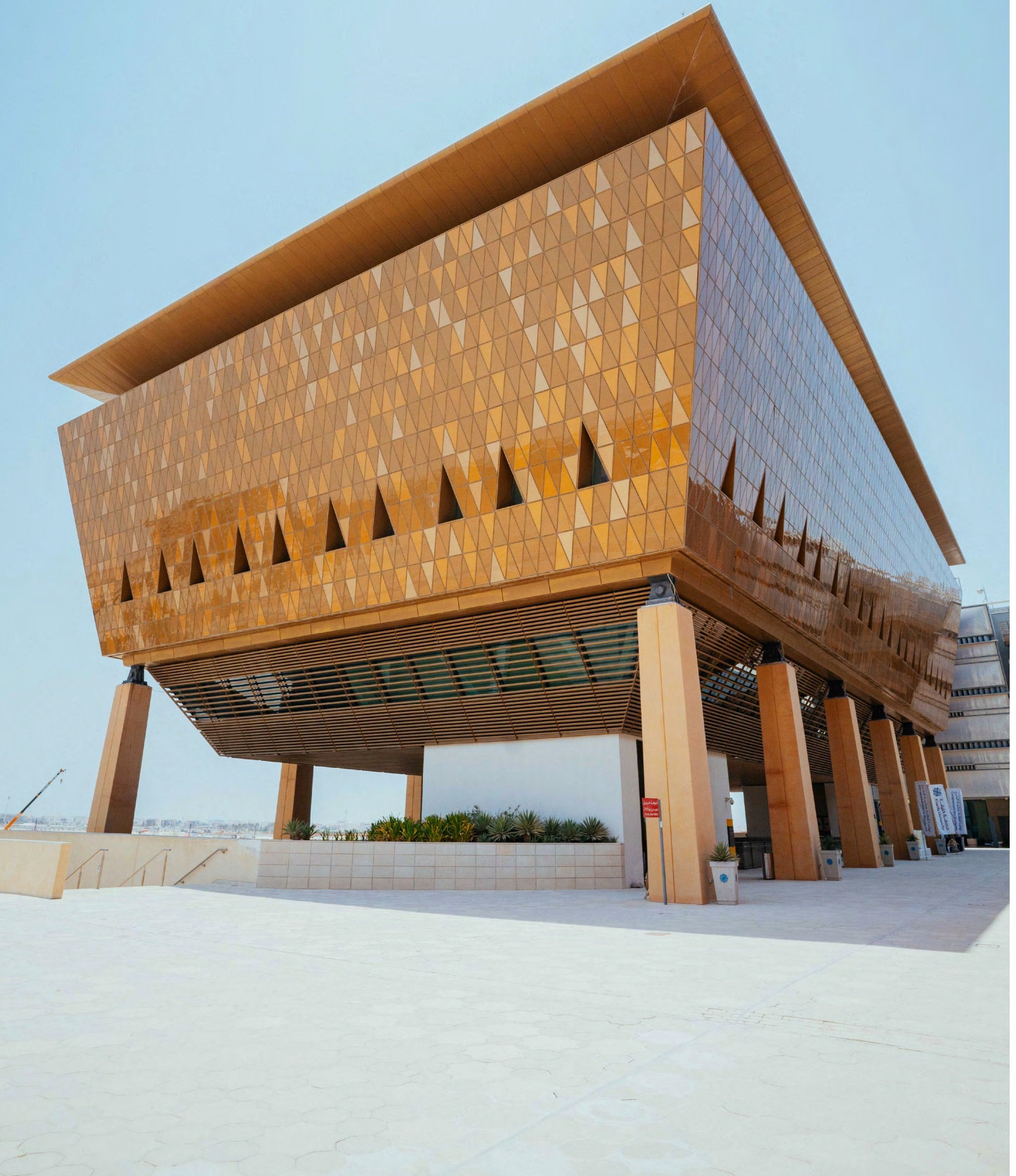
There are a number of food and retail outlets within Masdar City, offering a range of cuisines to those already living and working there. The British architectural company Foster and Partners created the overall concept for the project and continues to work on the individual buildings. It was developed using the planning principles of a traditional Arab settlement, but also includes modern technology.

Originally, Masdar City was designed to be completely car-free with Personal Rapid Transport pods (small, unmanned electric vehicles which run along a track, separated from pedestrians) to transport people all around the city and a pilot scheme was built. In 2010, it was decided that being completely car-free was not practical due to the cost. The pods are therefore restricted to the original pilot scheme and instead, driverless electric vehicles will be used for mass transit on the streets of the city.

The city creates clean solar energy from the sun through one of the largest solar farms in the Middle East, covering 22 hectares on the edge of the city. This is supplemented by rooftop solar panels on the main buildings.

Masdar Park is an outdoor dining destination, with cafés and restaurants housed inside recycled shipping containers powered by solar panels, as well as a children's playground, music wall, sports facilities, and design installations themed on sustainability. Visitors can also enjoy the 2.5km-long Al Mamsha trail which is perfect for running, walking, biking, and even fitness sessions. A football field and basketball court are also available for bookings.

It is open daily to the public. Parking available in the North Car Park. From there, visitors can access the city's visitor centre via shuttle service which consists of unmanned electric cars called Personal Rapid Transport (PRT). These pods will take visitors directly into the heart of the development. <https://masdarcity.ae/Visitor>



d.Jubail Mangrove Park

The stunning Jubail Mangrove Park is the first self-contained educational, nature and leisure destination of its kind in the emirate. Visitors can explore a haven for avian and marine species native to Abu Dhabi at the serene Jubail Mangrove Park, a sanctuary that offers incredible photo opportunities.

The 2.6 km boardwalk navigates through a variety of ecosystems including mangrove habitat, intertidal mudflats, salt marshes, lagoon channels, and unique sandstone geological formations (zeugens). Visitors can discover a nature-rich side to Abu Dhabi, and spot an array of wildlife, from turtles to herons, gazelle and more. Birdwatchers, nature-lovers and photographers will be in their element here. This experience is further enhanced by a series of attractions, including kayak launch points, floating pontoons, expansive net-structures that allow children to get their feet wet, stepping pads, and seating nodes with educational signage. The highlight is undoubtedly the two-storey observation tower, which provides spectacular panoramic views throughout the wetland habitats and across to the city. The route then terminates at the visitor centre and café, complete with plaza seating, food van area, and an educational terrace for school or group visits.

This one-of-a-kind, family-friendly park aims to enhance awareness, appreciation and understanding of the important ecological function of the city's mangrove habitats, which not only support biodiversity and protect the Abu Dhabi coastline, but also help prevent climate change by sucking up carbon dioxide and other greenhouse gases, and trapping them in their flooded soils for millennia.

Surrounded by thousands of mangrove trees, picturesque estuaries and a sparkling waterfront, Jubail Island is home to six village communities that offer the best in residential estates. Located just outside Abu Dhabi between Yas Island and Saadiyat Island, Jubail Island offers an experience unparalleled anywhere else in the UAE. The site is located in a protected natural environment and home to some of the most stunning and diverse wildlife and greenery. Further adding to the luxury, beauty and serenity of the community, Jubail Island's Marina, a spacious waterfront marvel ready to welcome yachts, boats and cruise liners, connects it to the mainland and its neighboring islands. Jubail Island will house 5,000+ residents, and has up to 400 single-family and 400 multi-family homes.

Current amenities: Jubail Mangrove Park, Kayaking, Pura Eco Retreat

Future amenities: Retail Street, Schools, greenery and Parks, Jubail Marina, Jubail Beach Club

<https://leaddevelopment.ae/projects/jubail-island-2/>



5.1 Sports and Leisure Activities

a. Abu Dhabi City Golf Club

Abu Dhabi City Golf Club is located in the Al Mushrif area, on Mussafah Road, at the very heart of the city of Abu Dhabi, and is locally known as the 'People's Golf Course'.

The Abu Dhabi City Golf Club began life as the Abu Dhabi Golf & Equestrian Club in 1976. For 22 years it was an 18-hole sand course but, in 1998, it was transformed into Abu Dhabi's first all grass course. Its then nine holes were designed by the respected British golf course designer Ian Scott Taylor, featuring one Par 5, six Par 4 and usual two Par 3.

As well as being a golf venue, events, banquets and weddings are also held at the facility. The clubhouse has its own restaurant and bar, and the club has a number of other restaurants with a range of cuisines including Japanese sushi and Korean food. A daily barbecue is held on the 'pavilion' terrace.

Golfers benefit from a range of facilities such as locker rooms and golf carts equipped with GPS systems for easy navigation. For those wanting to improve their game can join the golf academy, which has the only two-level driving range in Abu Dhabi, and younger players can join the junior academy. For those interested in other sports, there are three floodlit tennis courts, an outdoor swimming pool with a Jacuzzi and pool bar, and a gym. A sauna is available for relaxation afterwards.

Club website: <https://adcitygolf.com>

DID YOU KNOW?

Holes 7–9 are really difficult to play and are known as 'Amen Corner' by locals!



b.Abu Dhabi Golf Club

The award-winning Abu Dhabi Golf Club is located opposite Al Forsan International Sports Resort, off the Sheikh Zayed Bin Sultan Street. The club is a 15-minute drive from the city centre and is 10 minutes from Zayed International Airport.

The distinctive clubhouse was built in the shape of a falcon on top of a golf ball. The club provides one of the most luxurious golf experiences in the Middle East, and is described as a 'super course' by the golfing media.

Troon Golf, a famous international golf-resort management organisation, manages the club, which has two golf courses. Both courses were designed by Peter Harradine, **a world-class golf-course architect**:

- Par 72, an 18-hole championship course with 90 challenging bunkers and seven lakes.
- Par 36, a nine-hole garden course which is floodlit for night-time use.
- In addition to the two courses, there is a driving range and a putting green. Golfers can hire clubs, trolleys and buggies, or purchase equipment in the professional golf shop,
- Facilities such as a locker room, restaurant, and a swimming pool.
- 2 Wedding Venues

The resort won the AGM Platinum Award in 2016, and won Best Course in the Middle East Asia Pacific Golf Summit in 2013.

The National Course at Abu Dhabi Golf Club is situated in the shadow of the UAE's national symbol. At 7600 yards from the back tees, it presents a challenging course for golfers of all levels, testing every aspect of their game. Each hole boasts a unique layout with risk and reward opportunities for those who are up for the challenge.

Official website:

<https://www.abudhabigolfclub.abudhabi/festive-season>

VOGO Abu Dhabi Golf Resort & Spa

Located on Abu Dhabi's premier golf course, the VOGO Abu Dhabi Golf Resort & Spa is a vital part of the only true golf resort in the capital, offering unique surroundings and a highly attractive location. It is home to a wide selection of restaurants and bars and also features VOGO Abu Dhabi Spa, multiple swimming pools, and a gym.

Source: <https://www.vogohotels.com/>

DID YOU KNOW?

Although the club officially opened in 2006, the preparation planting of the grounds started back in 1992.



c.Saadiyat Beach Golf Club

This 18-hole golf course is located just off the Sheikh Khalifa Highway (E12) on Saadiyat Island. As the name indicates, it is located next to Saadiyat Beach, and is very close to the Park Hyatt Abu Dhabi Hotel and Villas and St. Regis Saadiyat Island Resort.

It opened in 2010, and it was the region's first beach-front golf course. The course was designed by Gary Player, the world-famous South African golf course architect and player, who won many major tournaments during his golfing career. It is a single 18-hole course of par 72 with many on-course hazards including 60 bunkers, saltwater lakes and sand dunes. Golfers may even spot one of the many strolling mountain gazelles as they play.

While playing a round, golfers may also be lucky enough to see dolphins in the sea and protected, critically endangered Hawksbill turtles. It won the 'Best Course in Abu Dhabi' in 2015, 2016, 2019, and from 2021 to 2023 by World Golf Awards. Saadiyat Beach Golf Club is recognised globally as a world class golfing destination. The fine restaurant and bar on the golf course is named after the Hawksbill turtle which uses the beaches of Saadiyat Island to lay its eggs. The club has a luxurious clubhouse with a terrace, a locker room and a putting green. Golf clubs, trollies and buggies are available for hire. The Saadiyat Beach Classic is a celebrity Pro-Am which involves both professionals and amateurs and is held after the Abu Dhabi Championship.

Contact : +971 2 404 3000

Source: <https://saadiyatland.ae/experience/saadiyat-beach-golf-club/>

DID YOU KNOW?

The Saadiyat Beach Golf Club course has been designed with sensitivity to the surrounding natural environment and in compliance with strict environmental guidelines.

d. Al Ghazal Golf Club

Established in 1997, the Al Ghazal Golf Club has an 18 hole course which measures 6711 yards of the white tees, with a par 71, and presents an exciting challenge to the novice and the experienced golfer. The front nine holes (par 35) are based around an archaeological site which was once an old coastline. The back nine (par 36), which have recently been developed, present a great challenge. As a sustainable golf course, players use a piece of artificial grass when hitting from the fairways. Instead of greens there are browns. These are created by compacting rolled and treated sand and, as the players quickly discover, they give an extremely true putting surface.

Ghazal Golf Club is an ideal venue for social functions such as concerts and other social activities as the outdoor ground is capable of hosting 3,000 people. Visitors can enjoy beautiful sunset view on the one-of-a-kind sand golf course area and wide F&B choices.

Contact information: 02 505 3314

e.Yas Links Golf Club

Yas Links Abu Dhabi represents the first true Links Golf Course in the Middle East region. It was designed by Kyle Phillips, one of the world's leading golf course designers.

The Championship Links course is located on the west shores of Yas Island, Abu Dhabi's Island of Entertainment. It offers a luxurious clubhouse, gym, swimming pool, male spa, world-class floodlit practice ranges, and Golf Academy. Set on the water's edge with dramatic views of the Arabian Gulf, Yas Links Abu Dhabi is the new home of the Abu Dhabi HSBC Championship – a Rolex Series event on the DP World Tour. It offers dining options include the award-winning Hickory's restaurant with stunning views over the mangroves and Abu Dhabi skyline, and Japanese restaurant MATSU.

The Par 72 Championship Links course, which has rolling hills and seashore green locations, opened in March 2010, and currently ranks 48th in Golf Digest's Top 100 courses in the world, and 60th in the World by Platinum Clubs of the World. Yas Links Abu Dhabi also played host to the golf element of the 2019 Special Olympics World held in Abu Dhabi.

The club is open 24 hours a day, seven days a week. Green fees do vary so it is wise to check up-to-date fees on the Yas Links web site:

<https://www.viyagolf.com/yaslinks/golf-course/>

Contact: +971 2 404 3004
golfbooking.ad@viyagolf.com

f.YAS Acres Golf & Country Club

A spectacular addition to the Abu Dhabi golf scene, this Fry/Straka-designed golf course is situated within the heart of Yas Acres community. The world class 3700 yard, 9-hole golf course serves up both a challenging game and a breathtaking backdrop for the community.

The floodlit par-36 course will test golfers with its compelling contours and long holes, spanning 130 acres. A major design element of the golf course is a low, meandering ridgeline that runs through the centre. The course also features a lake and stream system that flows throughout the entire course, supporting the growth of native desert plants and vegetation. The golf course is impressive visually, with large bunkers and water in play on four of the holes, and will provide a family-friendly atmosphere with players of all levels able to have fun out on the course.

Yas Acres Academy offers a variety of lesson packages, designed to suit any type of golfer. Our PGA Professionals are here to support you through each step of your golfing journey.

CONTACT: +971 2 404 3004

g.Yas Kartzone

Yas Kartzone is a go-kart venue situated near Gate 20 of the Yas Marina Circuit on Yas Island. Its track is 800m long with many difficult twists and turns. Adults, and children over the age of 5 and over 1.3 metres tall, can use the circuit. In Bambino Karts, children's sessions last 10 minutes for those aged 5 to 7 years old, while Junior Karts provide 12-min sessions for drivers aged between 8 to 12 years old. Adult sessions are for drivers over the age of 18 and these can last up to 15 minutes.

An 'Arrive and Drive' option means visitors can just turn up and have a go as long as karts are available, with advance bookings taken for groups of 15 or more. After each race, drivers can view the results on a television screen in the track's reception area. Drivers are also sent a text (SMS) message to inform them how their performance compares to other drivers as well as the best track times of the week and month, and drivers must observe a number of rules at the track.

Sneakers or trainers must be worn, not high heels or sandals. Before they get onto the track, drivers must sign in and change into racing clothes which are provided by the venue. These include helmets, gloves and overalls. All drivers are given a briefing about the rules and how to drive the karts before they set off.

The prices for go-karting are subject to change and visitors should check the venue's website for the latest information

Further your knowledge

Yas Kartzone website:

<https://www.yasmarinacircuit.com/en/kart>

Yas Kartzone video:

<https://www.youtube.com/watch?v=vvb7AFDECEg>



h.Al Forsan International Sports Resort

Al Forsan International Sports Resort is just a 10-minute drive from Zayed International Airport. The site offers a number of outdoor and indoor facilities for anyone with a keen interest in shooting, outdoor activities include sporting clays and archery, while indoor activities available including handgun ranges, rifle ranges and laser simulators.

Visitors can enjoy 18 sporting clay ranges, each with four different traps for shooters of all abilities. Four luxury air-conditioned pavilions, and a multi-level veranda give visitors variety and comfort when shooting.

Three automatic ball-trap ranges offer beginners the opportunity to use state-of-the-art voice control to decide when to release their clays. More experienced shooters may benefit from three Olympic/double trap fields with similar high-tech voice control options.

The resort also includes six skeet (clay shooting) fields which have been built to the high standards demanded by the International Shooting Sports Federation (ISSF). Visitors can rent a large range of high calibre firearms at the resort.

The indoor 25m and 50m handgun ranges are available for shooting. Each range has 10 lanes, catering for everyone from complete beginners looking to shoot for enjoyment up to Olympic shooters. The ranges also offer the opportunity to fire small-calibre firearms such as a Glock, Sig Sauer or Beretta Pistol.

Shooters can take advantage of a 300m indoor rifle range featuring an in-built LOMAH system (Location of Miss and Hit). This allows visitors to keep track of their shots on a monitor which updates in real-time. Two indoor laser simulators allow people of all ages to practise the art of shooting.

Also offering archery, the resort has 10 lanes, giving archers the option to fire arrows from as close as five metres from the target to as far away as 60m. High-quality equipment, including recurve bows, is available to hire on site. All archers will be supplied with safety and protective equipment such as tabs, arm guards and releases.

All shooters are required to show identification documents to use the facilities. Valid identification includes: a driver's licence, an original passport or a copy.



i.Abu Dhabi

Equestrian Club

The Abu Dhabi Equestrian Club was established in 1978. It is one of the region's most impressive venues for horse racing and show-jumping events, where visitors can view Arabian horses in the emirate. The club hosts numerous races annually, including The President's Cup, National Cup Day and the Emirates Championship.

Flat racing is a form of horse racing which is run on a level racecourse. It is run over a predetermined distance from two furlongs (402m) up to three miles (4,828m), and is either a test of speed, stamina or both, whilst the skill of the jockey is determined by his ability to restrain the horse or impel it. Flat racing does not require horses to jump over any obstacles. In many countries, flat racing is the most common form of horse racing. Since 1991 horse racing has taken place at Abu Dhabi Equestrian Club following international standards with slight adjustments to meet local requirements.

Endurance riding is an equestrian sport based on controlled long-distance races. It is one of the international competitions recognised by The International Federation for Equestrian Sports (FEI). Although endurance riding is a relatively new sport in the UAE, it has enjoyed rapid success and growth, and is currently the fastest-growing equestrian sport in the emirate. It enjoys the longest season of any equestrian discipline, from early November until the following May, usually concluding with the popular night rides held in the Emirates International Endurance Village.

Show jumping, also known as 'stadium jumping', 'open jumping', or simply 'jumping', is a part of a group of English riding equestrian events which also includes dressage, hunters, and equitation. Jumping classes are commonly seen at horse shows throughout the world. Since the establishment of the Abu Dhabi Equestrian Club, show jumping, which was once a very small part of the club and activities, has developed into one of its main equestrian disciplines.

A wide range of horses and ponies are available for lessons; stable management and specialised training courses by qualified instructors are available.

Contact the Abu Dhabi Equestrian Club for more details <https://www.adec.ae>



j.Al Wathba Cycle Track

Al Wathba Cycle Track is one of the best and most scenic cycling destinations in the emirate. Surrounded by miles and miles of desert, this area's ethereal landscape played a starring role in the film *Star Wars: The Force Awakens*, with a cycle here promising picturesque vistas, especially during sunrise and sunset.

The illuminated track can be divided into several routes. Beginner cyclists can ride the 8-kilometre or 16-kilometre routes, while expert cyclists can take on the 20-kilometre, 22-kilometre, or full 30-kilometre routes.

You'll find this unique track near the Camel Racetrack, approximately a 40 to 50-minute drive from Abu Dhabi.





a. Beaches in Abu Dhabi

Abu Dhabi City has many public and private beaches for visitors to relax on. The city is surrounded by the beautiful warm waters of the Arabian Gulf, and visitors can enjoy clean and safe beaches. Some have Blue Flag status, the international award for beaches and marinas that guarantees clean and safe bathing water. All of Abu Dhabi's main beaches have good amenities like public toilets, food and beverage outlets, parking and most have sun loungers and umbrellas. Most beaches are free for visitors although some do charge an entry fee.

Beachwear should only be worn in the beach areas and not in public or when accessing or exiting beaches, and men and women should cover up when away from the beach areas. Modest western-style swimsuits or bikinis for women are acceptable at all beaches, but visitors should not wear overly revealing swimwear, and topless or nude sunbathing is strictly prohibited. Men should only bare their chests in beach areas.

b.Corniche Beach

Corniche Beach, which has Blue Flag status and plenty of lifeguards, is a safe beach which brings in up to 50,000 visitors per month. There is a public beach plus three other sections. Section one, Al Sahil, is for singles and groups. Section two is denoted as a quiet zone for families and screened off from public view. Section three is also for families and screened off from public view. Visitors can enjoy swimming up to 40 metres away from the shore - the area beyond this is cordoned off with floating fences.

Beach facilities include a children's playground, basketball and football courts, prayer facilities, a beach library, a tourist and community police office, bathrooms, showers and changing rooms can be found.

Corniche Beach is located in the middle west section of the Corniche Road walk- and cycleway. There are more than 1,100 free parking spaces within a five-minute walk of the beach. Weekends are busier so available beach umbrellas may be harder to find.

A'L BAHAR section was opened in 2018 as a vibrant beachfront community located on the Corniche. The 80,000-sqm mixed-use development has a total of 48 dining, retail and leisure outlets in stylish units along a pristine length of beachfront.

Abu Dhabi visitors and residents can cool off at 'AquaFun', an inflatable waterpark concept, as well as access public spaces for concerts and community events throughout the year, with a 500-metre promenade, directly on the shores of the Arabian Gulf.

For opening timings and ticketing check the website:

<https://dmt.gov.ae/en/adm/Abu-Dhabi-Corniche-Beach>

c.Yas Beach

A truly unique beach club, lounge and restaurant situated on Yas Island and one of Abu Dhabi's most popular locations, Yas Beach is easily connected to all of the island's extensive range of leisure activities.

Yas Beach is the perfect combination of relaxation, but all the while being vibrant and fun. The family-friendly environment is perfectly suited for all occasions.

Visitors can enjoy a lounge area with an open-air DJ booth, plus a bar, infinity pool and private chalets. A splash-type pool for children which has a waterfall feature is also available. Sport lovers can enjoy a number of activities including beach volleyball, a wide range of motorised and non-motorised sports such as jetski, sailing, kayaking and paddle boarding. Staying at any of Yas Island's hotels can enable residents to enter the beach for free with a voucher from the hotel's reception. Also, guests can enjoy a wide selection of dining options in our food kiosks from freshly made Italian pizzas to authentic Arabic food, the rich taste of healthy smoothies and refreshing beverages.

Check out the website for updated timings and ticket fees:
<https://www.yasisland.com/en/things-to-do/leisure-activities/yas-beach>





d.Saadiyat Beach Club

Built on a 39,500 square metre site along the shores of the Arabian Gulf, Saadiyat Beach Club is no ordinary venue. Set amid glorious natural surroundings, this lifestyle venue boasts a truly exceptional location, with an infinity pool and a variety of amenities including private cabanas, spa services, contemporary dining and private beach access. Situated in a protected area of the beach that has been certified Blue Flag since 2013, guests can walk, swim, relax and make everlasting memories. If you're lucky, you may see some dolphins playing in the bay, or even catch a glimpse of Hawksbill turtles on the shore.

Saadiyat Beach Club offers its guests numerous world-class facilities including a 650 square metre outdoor infinity pool, pool bar, library, gym and spa, sauna and steam rooms, private poolside cabanas and sun loungers on the beach for exclusive use.

Check out the website for more updated opening timings and day pass or membership fees:

<https://www.saadiyat island.ae/experience/saadiyat-beach-club/>

e.Kai Beach

Kai Beach, located on Saadiyat Island, is a 400-metre beach surrounded by a Dune Protection Zone, prohibiting any development 60 metres from the shoreline. This is to prevent damage to the dunes and to protect the nesting areas of the endangered hawksbill turtles which nest and breed on Saadiyat Island.

Visitors can enjoy eco-friendly water-sports activities such as windsurfing and sailing, weekly beach yoga classes, the beach café and a choice of 300 sun loungers. There is also a towel and locker rental service, showers and changing rooms, a retail shop and 200 car-parking spaces within easy walking distance of the beach.

Check out the website for more updated opening timings and day pass or membership fees:

Source: <https://www.kaibeachsaadiyat.com>

Source: <https://www.timeoutabudhabi.com>

Source: <https://www.saadiyat island.ae/experience/kai-beach/>

Source: <https://www.thenationalnews.com>

f. Al Bateen Beach

Al Bateen is a public beach which overlooks Hudayriyat Island and Hudayriyat Bridge to the west of Abu Dhabi. Covering 800 metres of waterfront, Al Bateen Beach has been awarded the prestigious Blue Flag sustainability award by the Emirates Wildlife Authority.

The beach has a children's playground, volleyball courts, football pitches, prayer facilities, tourist and community police offices, a restaurant and café, water games rental and sun lounge and umbrella rentals.

The beach's opening hours are from 7am to midnight daily, and swimming times are from 7am to sunset. Al Bateen Public Beach has free entry to everyone.

g. Al Bateen Ladies Social Club By Matcha

The inclusive country club is a chic space for women seeking the ultimate lifestyle experience. Located on the shores of Al Bateen Beach with an expansive landscaped garden inspired by the flourishing greenery of Al Bateen itself, Al Bateen Ladies Club offers Matcha Club's distinct padel courts and experiences, a variety of group and private classes such as Pilates and Yoga, as well as an infinity pool and private beach, a spa, Mediterranean restaurant, concept store and florist and bakery, all under one exquisitely designed roof.

Check out the website for more updated opening timings and day pass or membership fees:

<https://www.matcha-albateen.ae/>

h.Noukhada

Noukhada is Abu Dhabi's premier watersports centre and is located near Mangrove National Park. It offers a unique opportunity for visitors to practise or try new sports and enjoy the natural environment at the same time. Noukhada's philosophy is based on the '3Es' – education, exercise and environment - and every tour contains all three.

There is a wide variety of activities on offer to visitors, including kayaking, sailing, windsurfing, stand-up paddle boarding and dragon boating. Visitors get the opportunity to take part in these activities in the knowledge they are doing so in a way which will not damage the local environment.

Activities are operated from various locations, including Yas Beach. The main activities operate from what is known as the E48 launch point, a location on Al Salam Street in the Al Qurm area of Abu Dhabi, as well as from the Eastern Mangrove Marina. Kayak tours are available to a number of different destinations around Abu Dhabi, the most popular being a visit to the mangroves. Through the tours, visitors have an environmentally friendly way of exploring and encountering local wildlife, including dolphins, fish, turtles and birds. Dry bags are available to help visitors keep their belongings and cameras safe.

Visitors can even take a self-guided tour through the mangroves on kayaks. Evening tours are also available, with dinner at a selection of local restaurants included.

Noukhada's Facebook page:

<https://www.facebook.com/NoukhadaUAE/>

DID YOU KNOW?

Noukhada Adventure Company set a world record for the fastest journey around Yas Island by sailboat.



i.Yas Marina

Yas Marina is a renowned marina for yachts, located on Yas Island. It offers 227 berths with an annual charge. It caters for yachts from eight metres up to 90 metres in length, and for super-yachts up to 150 metres in length. There are also 'casual berths' which allow visiting yachts to 'park' for up to four hours. Yas Marina also offers a choice of berths with views of the Formula 1 Etihad Airways Abu Dhabi Grand Prix track and non-track berths.

A highlight is the annual Grand Prix race week when visitors get a unique view of the circuit and visiting super-yachts. Activities and experiences at Yas Marina include physiotherapy, fitness facilities, a children's playground and a musical water fountain. Luxury boat charters, sightseeing tours and an ecofriendly boat tour of the island and surrounding areas are also available. The marina puts on a number of events and promotions throughout the year, so it is worth checking the website in advance of visiting.

A huge range of watersports is on offer including wakeboarding, wake surfing and wake skating, all of which usually involve being towed by a speedboat. Stand-up paddle boarding, kayaking, kitesurfing, tubes or inflatable tow rides, hydrofoil, flyboarding with a water jet pack, and sailing lessons are also available.

Further your knowledge

Visit the Yas Marina Website to find out what it has to offer:

<https://www.yasmarina.ae>

The Marina's pages has some great videos and up to date information on events:

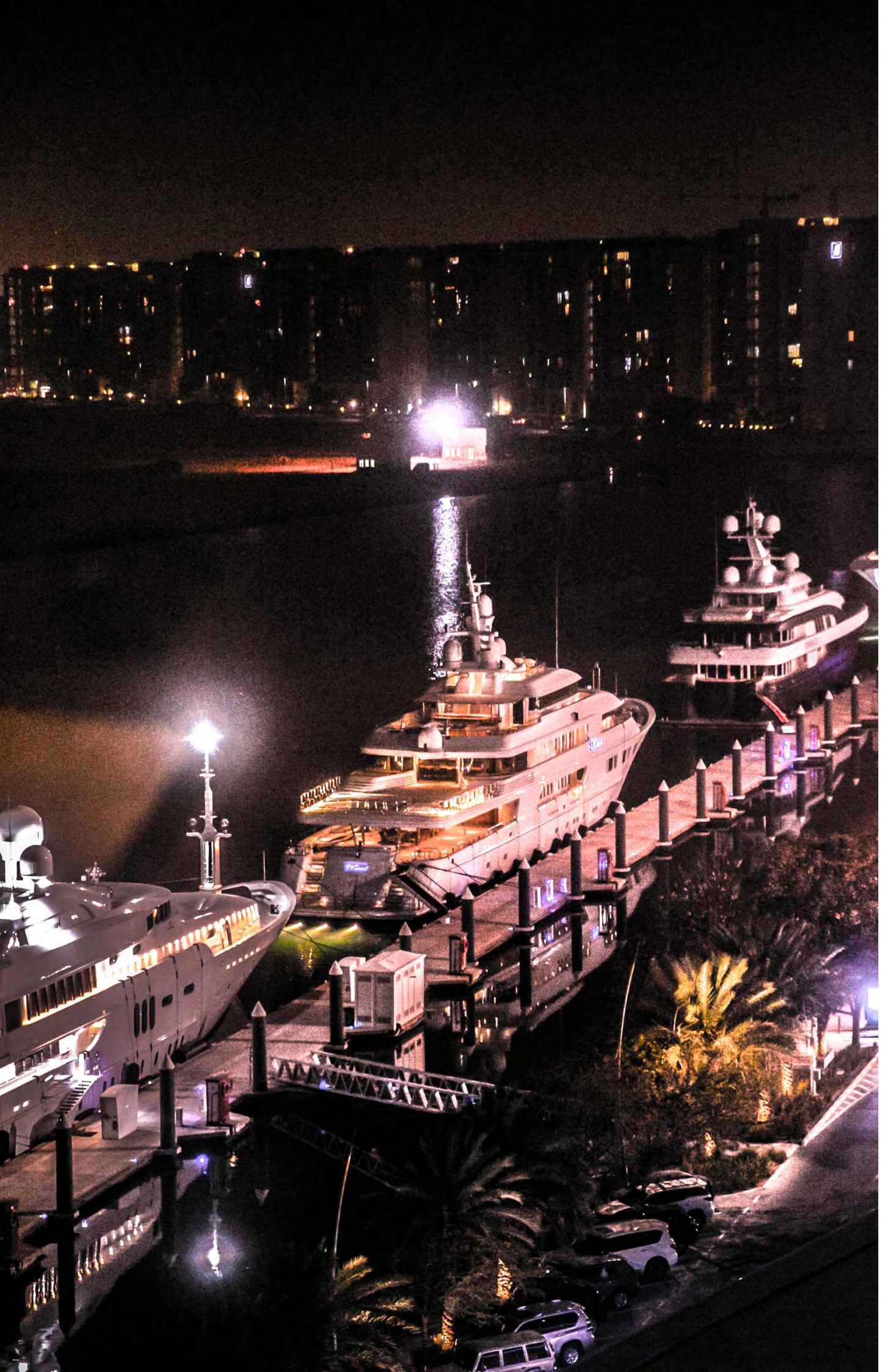
Facebook: www.facebook.com/YasMarinaAbuDhabi

Twitter: www.twitter.com/YasMarinaAD

Instagram: <https://www.instagram.com/YasMarinaAbuDhabi>

DID YOU KNOW?

Yas Marina is renowned for being one of the best super-yacht marinas in the world!



a. Shopping Malls in Abu Dhabi City

Abu Dhabi has a wide range of malls, including some extra-special luxury malls. Shopping is a national pastime in Abu Dhabi in the souks (see section 5 for information on souks and traditional shopping) and in the modern air-conditioned malls. Visitors and residents use the malls not only to shop but to catch up with friends and socialise. There are many activities available and a wide variety of eating and drinking options. You can watch a movie, ice skate or go bowling until late in the evening. During Eid and Ramadan, special events, shows and concerts are regularly held at the malls around the city.

General information about shopping malls can be found on the Visit Abu Dhabi website:

<https://visitabudhabi.ae/en/things-to-do/shopping>

Reem Mall

Reem Mall is a shopping mall located in Al Reem Island, Abu Dhabi. The mall features 400+ international and local store brands, approximately 85 restaurants, and Snow Abu Dhabi, the first-ever indoor snow park in the capital and the second to open in the United Arab Emirates.

It has a retail space of more than 190,000 square metres (2,000,000 square feet), with a car park having approximately 6,800 spaces. It will also have an on-premises logistics hub that allows store-to-door delivery anywhere in the UAE (up to 24 hours) and across the GCC (up to 72 hours), which is the first time it has been applied to a mall.

<https://www.reemmall.ae/>

The Galleria

The Galleria Al Maryah Island is an impressive mall situated in the heart of Abu Dhabi. Home to over 400 stores, including 300 of the world's most popular brands, 100 food and beverage options and upbeat entertainment for people of all ages, The Galleria is a fun, family-friendly space great for whiling away a few hours.

First opened in 2013 as a luxury and fine-dining destination with brands such as Louis Vuitton, Chanel, Cartier, Gucci, Dior, La Petite Maison, Coya and Zuma, in 2019 it dramatically expanded its offering, opening 250 new stores including Zara, H&M, West Elm, Decathlon, Massimo Dutti, and Debenhams, as well as family favorites like The Cheesecake Factory, PF Chang's and Paul Café.

If you feel like catching a movie while you're shopping, the 21-screen VOX Cinema with IMAX can help. A flagship Xtreme Zone and urban parks catering to young adventurers and action-loving families are thoughtful additions, adding an active edge to shopping in the city.

<https://www.thegalleria.ae/en>

Avenue at Etihad Towers

Avenue at Etihad Towers is an exclusive luxury retail boutique destination for fashion and jewellery connoisseurs who appreciate the finer things in life. Showcasing breathtaking architecture and interior design, Avenue is set in the capital's iconic and prestigious Etihad Towers development, home to covetable residences and commercial spaces as well as the plush five-star Conrad Abu Dhabi Etihad Towers.

Avenue's discerning guests can enjoy personalised client services while choosing from a hand-picked array of the world's most exclusive brands, showcasing the latest high-end fashion collections, as well as the world's finest jewellery and timepieces. Think Van Cleef & Arpels, Tom Ford and Stefano Ricci, among others. It's also home to the only exclusive Aston Martin showroom in the capital.

<https://avenueatetihadtowers.ae/en/>

Yas Mall

Yas Mall has more than 400 stores to choose from, and more than 60 restaurants and cafés over three floors. Abu Dhabi's largest mall is located at the heart of Yas Island and also offers family entertainment, including a 20-screen state-of-the-art cinema operated by VOX Cinemas, a family entertainment zone by Fun Works, and a direct link to Ferrari World Abu Dhabi and CLYMB Abu Dhabi. It also houses the capital's only Apple store and the only interactive entertainment shop 'Manchester City Challenge'.

Further information is available from:

<https://yasisland.ae/yas-mall/>

Abu Dhabi Mall

Abu Dhabi Mall has 200 shops and an average of 40,000 visitors a day. It is located in Al Zahya district, connected to Beach Rotana Hotel. The mall also has lots of restaurants and coffee shops, and features a children's play area and a cinema.

Further information is available from the mall's website:

www.abudhabi-mall.com

Marina Mall

Marina Mall, located in Al Marina district and a three-minute walk from the Corniche, has more than 400 stores over five floors. Also available at Marina Mall is Bounce, an incredible indoor trampoline park and a great place for big and little people to burn off energy. The mall is going through an expansion project for a new promenade, Marina Walk, offering 546 metres of prime waterfront views and 123,000 sqm of exciting leisure and entertainment experiences, including Abu Dhabi's first skate park.

Further information is available from the mall's website:

<https://marinamall.ae>



Al Wahda Mall

Attracting over 30 million visitors annually, and housing over 350 brands including IKEA, Al Wahda Mall is located opposite the main bus terminal in the heart of Abu Dhabi. It features a wide range of stores, large and small, local and international, including Lulu Hypermarket, H&M, Mamas & Papas, Gant, and Mac. The mall also has over 50 food and beverage outlets.

Further information is available from the mall's website:

<https://www.alwahda-mall.com>

World Trade Centre Mall

The World Trade Centre Mall is located on the site of the old Central Market, just off 5th Street in Abu Dhabi city centre. It features as well as several shopping outlets and wide selection of casual dining options.

The mall also features an eight-screen cinema, more than 3,000m² of terraces and landscaped rooftop gardens, and two central atriums that sit under a fully retractable roof. It hosts a break-recording indoor slide as the tallest and longest stainless-steel slide in the Middle East, called 'Velocity'. The two slides are 68-metres and 54-metres long, and have a sliding speed of 2 to 3 metres per second. The megastructure has a transparent section to give visitors a view of the mall as they slide.

Further information is available from the mall's website:

<https://www.wtcad.ae/en/home>

Dalma Mall

Situated in the Mussaffah area, Dalma Mall hosts variety of retail and dining outlets under one roof, occupying a total area of 255,000m² with a total gross leasable area of 150,000m². Residing under one roof are 425 retailers, with various experiences in fashion, food and beverage, and entertainment. It is also the home to a fully-fledged hospital. Dalma Mall has parking for 6,300 cars, a 14-screen cinema, and 15 mall entrances.

Further information is available from the mall's website:

<https://www.dalmamall.ae>



Abu Dhabi Tourist Guide
Training & Licensing Programme

Regions and Islands of Abu Dhabi